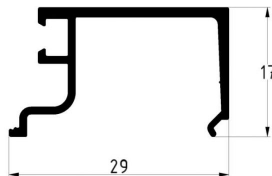
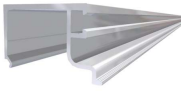


ALUMINUM PROFILES

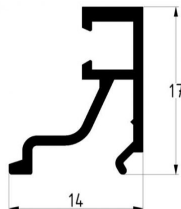
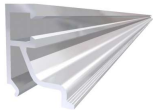


SNAP ON PROFILE FOR SINGLE GLAZING

ARTICLE: 0034

Snap on profile for full vision sections with single glazing
Material: Aluminium anodowane
Length: 6000 mm

Factory price: 34.00 € excl. VAT / piece
Weight: 1.34 kg **Shipping class:** Dłużyca

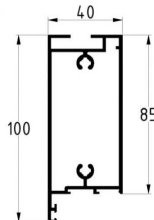
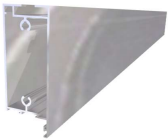


SNAP ON PROFILE FOR DOUBLE GLAZING

ARTICLE: 0035

Snap on profile for full vision sections with single glazing
Material: Aluminium anodowane
Length: 6000 mm

Factory price: 26.00 € excl. VAT / piece
Weight: 0.74 kg **Shipping class:** Dłużyca

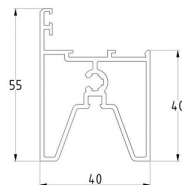
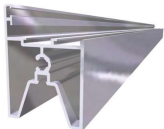


SIDE AND BOTTOM PROFILE

ARTICLE: 0554

Aluminium side and bottom profile for full vision aluminium section
Material: Aluminium anodowane
Length: 7000 mm

Factory price: 160.00 € excl. VAT / piece
Weight: 0.00 kg **Shipping class:** Dłużyca

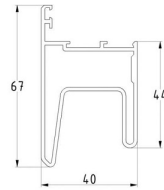
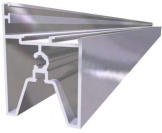


BOTTOM PROFILE FOR SYMMETRICAL PANEL

ARTICLE: 0555

Aluminium Bottom profile for full vision sections of industrial sectional doors with symmetrical edge
Material: Anodised Aluminium
Length: 7000 mm

Factory price: 105.53 € excl. VAT / piece
Weight: 7.13 kg **Shipping class:** Dłużyca



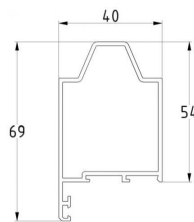
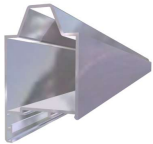
BOTTOM PROFILE FOR PANEL THYSSENKRUPP/HOESCH

ARTICLE: F

Aluminium bottom profile for panel ThyssenKrupp/Hoesch with finger protection edge for galzed sections
Material: Anodised Aluminum
Lenght: 7000 mm

Factory price: 89.00 € excl. VAT / piece

Weight: 7.45 kg **Shipping class:** Dłużyca



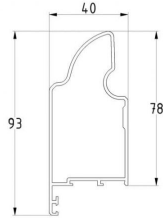
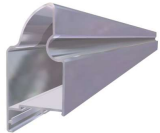
TOP PROFILE FOR SYMMETRICAL PANEL

ARTICLE: 0556

Aluminium top profile for panel ThyssenKrupp/Hoesch with finger protection edge for galzed sections
Material: Anodised Aluminum
Lenght: 7000 mm

Factory price: 99.00 € excl. VAT / piece

Weight: 5.93 kg **Shipping class:** Dłużyca



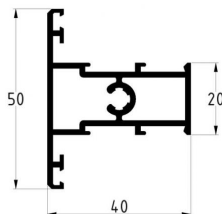
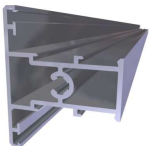
TOP PROFILE FOR PANEL THYSSENKRUPP/HOESCH

ARTICLE: F

Aluminium top profile for panel ThyssenKrupp/Hoesch with symmetrical (industrial) edge for galzed sections
Material: Anodised Aluminum
Lenght: 7000 mm

Factory price: 84.00 € excl. VAT / piece

Weight: 7.45 kg **Shipping class:** Dłużyca



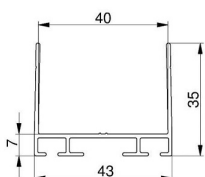
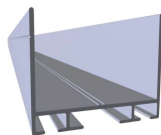
CENTRE PROFILE

ARTICLE: 0557

Aluminum centre profile for glased sections
Material: Anodised Aluminum
Lenght: 7000 mm

Factory price: 86.00 € excl. VAT / piece

Weight: 0.00 kg **Shipping class:** Dłużyca

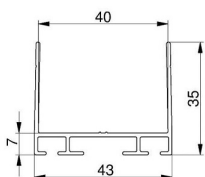
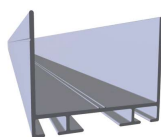


TOP / BOTTOM PROFILE H=35 MM

ARTICLE: 6090

Aluminium profile for 40mm panels of sectional door glazed sections
 Material: Not anodised Aluminium
 Length: 6090 mm

Factory price: 27.49 € excl. VAT / piece
Weight: 2.65 kg **Shipping class:** Dłużyca

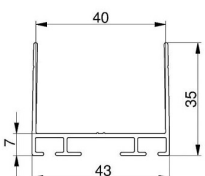
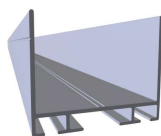


TOP / BOTTOM PROFILE H=35 MM BLACK

ARTICLE: R9011-6090

Aluminium profile for 40mm panels of sectional door glazed sections
 Material: Not anodised Aluminium
 Length: 6090 mm
 color: RAL9011

Factory price: 27.49 € excl. VAT / piece
Weight: 2.65 kg **Shipping class:** Dłużyca

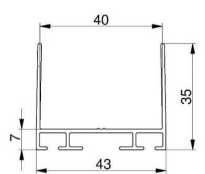
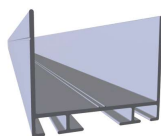


TOP / BOTTOM PROFILE H=35 MM

ARTICLE: 5050

Aluminium profile for 40mm panels of sectional door glazed sections
 Material: Not anodised Aluminium
 Length: 5050mm

Factory price: 22.79 € excl. VAT / piece
Weight: 2.2 kg **Shipping class:** Dłużyca

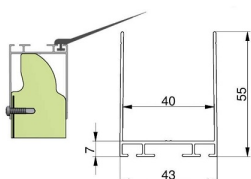
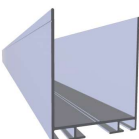


TOP / BOTTOM PROFILE H=35 MM

ARTICLE: 4040

Aluminium profile for 40mm panels of sectional door glazed sections
 Material: Not anodised Aluminium
 Length: 4040 mm

Factory price: 18.24 € excl. VAT / piece
Weight: 1.76 kg **Shipping class:** Dłużyca

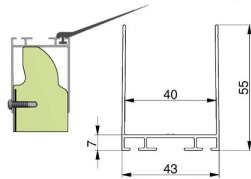
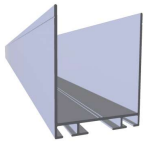


TOP / BOTTOM PROFILE H=55 MM

ARTICLE: 6090

Aluminium profile for 40mm panels of sectional door glazed sections
 Material: Not anodized Aluminium
 Length: 6090mm

Factory price: 30.12 € excl. VAT / piece
Weight: 3.45 kg **Shipping class:** Dłużyca

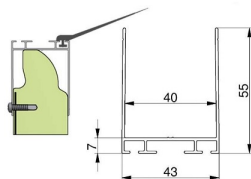
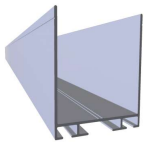


TOP / BOTTOM PROFILE H=55 MM BLACK

ARTICLE: R9011-6090

Aluminium profile for 40mm panels of sectional door glazed sections
Material: Not anodized Aluminium
Length: 6090mm
color: RAL9011

Factory price: 30.12 € excl. VAT / piece
Weight: 3.45 kg **Shipping class:** Dłuzyca

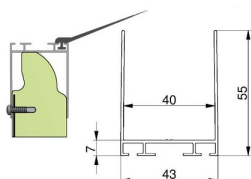
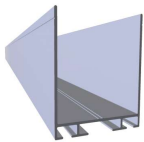


TOP / BOTTOM PROFILE H=55 MM WHITE

ARTICLE: R9016-6090

Aluminium profile for 40mm panels of sectional door glazed sections
Material: Not anodized Aluminium
Length: 6090mm
color: RAL9016

Factory price: 30.12 € excl. VAT / piece
Weight: 3.45 kg **Shipping class:** Dłuzyca

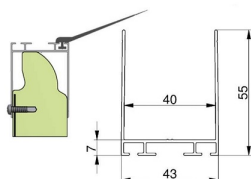
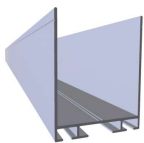


TOP / BOTTOM PROFILE H=55 MM

ARTICLE: 5050

Aluminium profile for 40mm panels of sectional door glazed sections
Material: Not anodized Aluminium
Length: 5050mm

Factory price: 25.49 € excl. VAT / piece
Weight: 2.86 kg **Shipping class:** Dłuzyca

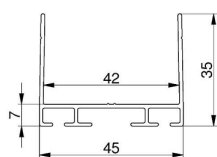
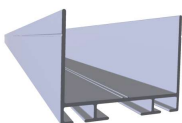


TOP / BOTTOM PROFILE H=55 MM

ARTICLE: 4040

Aluminium profile for 40mm panels of sectional door glazed sections
Material: Not anodized Aluminium
Length: 4040mm

Factory price: 20.38 € excl. VAT / piece
Weight: 2.29 kg **Shipping class:** Dłuzyca



TOP / BOTTOM PROFILE 42 MM, H=35 MM

ARTICLE: 6090

Profile for 42mm panel for sectional garage and industrial doors
Material: Not anodized Aluminium
Length: 6090mm

Factory price: 31.53 € excl. VAT / piece
Weight: 2.72 kg **Shipping class:** Dłuzyca

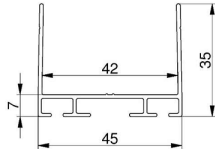
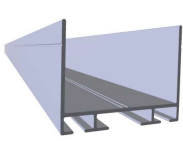
TOP / BOTTOM PROFILE 42 MM, H=35 MM

ARTICLE: 5050

Profile for 42mm panel for sectional garage and industrial doors
Material: Not anodized Aluminium
Length: 5050mm

Factory price: 26.16 € excl. VAT / piece

Weight: 2.26 kg **Shipping class:** Dłużyca



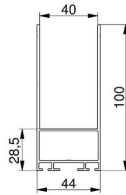
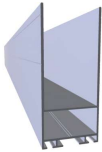
TOP / BOTTOM PROFILE H=100 MM

ARTICLE: 6090

Aluminium profile for 40mm panels of sectional door glazed sections
Material: Aluminium
Length: 6090 mm

Factory price: 115.00 € excl. VAT / piece

Weight: 2.65 kg **Shipping class:** Dłużyca



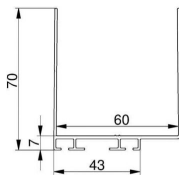
TOP / BOTTOM PROFILE FOR 60MM PANELS

ARTICLE: 6090

Aluminium profile for 60mm sectional door panels
Material: Aluminium
Length: 6090 mm

Factory price: 39.49 € excl. VAT / piece

Weight: 4.87 kg **Shipping class:** Dłużyca



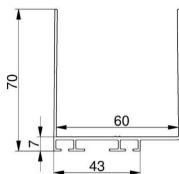
TOP / BOTTOM PROFILE FOR 60MM PANELS

ARTICLE: 5050

Aluminium profile for 60mm sectional door panels
Material: Aluminium
Length: 5050 mm

Factory price: 32.46 € excl. VAT / piece

Weight: 4.04 kg **Shipping class:** Dłużyca



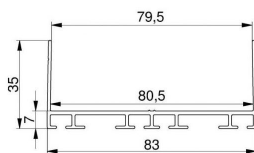
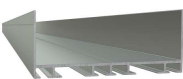
TOP / BOTTOM PROFILE FOR 80MM PANELS

ARTICLE: 6090

Aluminium profile for 80mm sectional door panels
Material: Not anodized Aluminium
Length: 6090 mm

Factory price: 34.82 € excl. VAT / piece

Weight: 4.57 kg **Shipping class:** Dłużyca



TOP / BOTTOM PROFILE FOR 80MM PANELS

ARTICLE: 4040

Aluminium profile for 80mm sectional door panels
Material: Not-anodised Aluminium
Length: 4040 mm

Factory price: 0.00 € excl. VAT / piece

Weight: 3.03 kg **Shipping class:** Dłużyca

TOP / BOTTOM PROFILE H=67 MM

ARTICLE: 20104

Profile for 40-42mm panel in sectional doors
Material: Not anodized Aluminium
Length: 6090 mm

Factory price: 0.00 € excl. VAT / piece

Weight: 2.92 kg **Shipping class:** Dłużyca

ALU BOTTOM L-PROFILE H=67-15 PAN=40 BLACK L=6090

ARTICLE: R9011-6090

Aluminum bottom / top profile, for 40mm thick panels.
Suitable for rubber seals: 80019, 80042, 80045, 825100 and top seal 825101.

Factory price: 33.85 € excl. VAT / piece

Weight: 3.25 kg **Shipping class:** Dłużyca

ALU TOP U-PROFILE H=35-15 PAN=40 MILL L=6090

ARTICLE: 6090

U-profile suitable for 40 mm top panels. This profile is placed over the sawn off top panel.
Alternative: 820100.

Factory price: 33.85 € excl. VAT / piece

Weight: 1.77 kg **Shipping class:** Dłużyca

BOTTOM PROFILE FOR PASS DOOR

ARTICLE: 3400

Aluminum bottom profile installed on service door leaf, for use with low threshold profile 875000 and bottom seal 875030. Suitable for 40mm panels.

Material: Anodised aluminum

Length: L=3400mm

Factory price: 11.36 € excl. VAT / piece

Weight: 3 kg **Shipping class:** Dłużyca