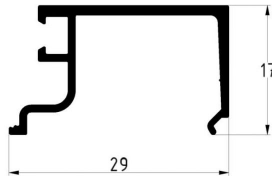
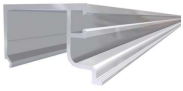


## ALUMINUM PROFILES

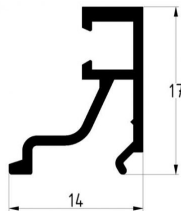
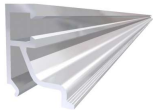


### SNAP ON PROFILE FOR SINGLE GLAZING

**ARTICLE:** 0034

Snap on profile for full vision sections with single glazing  
Material: Aluminium anodowane  
Length: 6000 mm

**Factory price:** 34.00 € excl. VAT / piece  
**Weight:** 1.34 kg **Shipping class:** Dłużyca

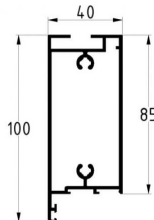
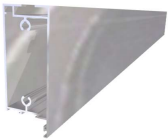


### SNAP ON PROFILE FOR DOUBLE GLAZING

**ARTICLE:** 0035

Snap on profile for full vision sections with single glazing  
Material: Aluminium anodowane  
Length: 6000 mm

**Factory price:** 26.00 € excl. VAT / piece  
**Weight:** 0.74 kg **Shipping class:** Dłużyca

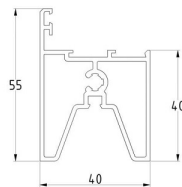
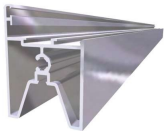


### SIDE AND BOTTOM PROFILE

**ARTICLE:** 0554

Aluminium side and bottom profile for full vision aluminium section  
Material: Aluminium anodowane  
Length: 7000 mm

**Factory price:** 160.00 € excl. VAT / piece  
**Weight:** 0.00 kg **Shipping class:** Dłużyca

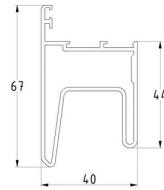
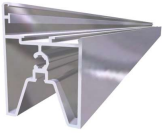


### BOTTOM PROFILE FOR SYMMETRICAL PANEL

**ARTICLE:** 0555

Aluminium Bottom profile for full vision sections of industrial sectional doors with symmetrical edge  
Material: Anodised Aluminium  
Length: 7000 mm

**Factory price:** 105.53 € excl. VAT / piece  
**Weight:** 7.13 kg **Shipping class:** Dłużyca



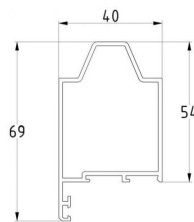
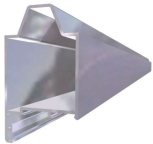
### BOTTOM PROFILE FOR PANEL THYSSENKRUPP/HOESCH

**ARTICLE:** F

Aluminium bottom profile for panel ThyssenKrupp/Hoesch with finger protection edge for galzed sections  
Material: Anodised Aluminum  
Lenght: 7000 mm

**Factory price:** 89.00 € excl. VAT / piece

**Weight:** 7.45 kg **Shipping class:** Dłużyca



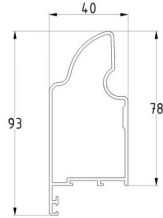
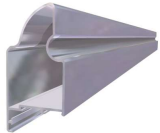
### TOP PROFILE FOR SYMMETRICAL PANEL

**ARTICLE:** 0556

Aluminium top profile for panel ThyssenKrupp/Hoesch with finger protection edge for galzed sections  
Material: Anodised Aluminum  
Lenght: 7000 mm

**Factory price:** 99.00 € excl. VAT / piece

**Weight:** 5.93 kg **Shipping class:** Dłużyca



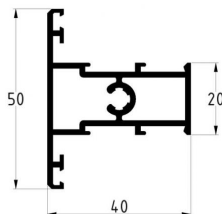
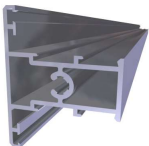
### TOP PROFILE FOR PANEL THYSSENKRUPP/HOESCH

**ARTICLE:** F

Aluminium top profile for panel ThyssenKrupp/Hoesch with symmetrical (industrial) edge for galzed sections  
Material: Anodised Aluminum  
Lenght: 7000 mm

**Factory price:** 84.00 € excl. VAT / piece

**Weight:** 7.45 kg **Shipping class:** Dłużyca



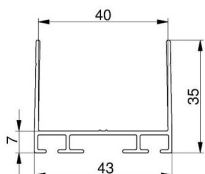
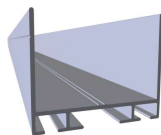
### CENTRE PROFILE

**ARTICLE:** 0557

Aluminum centre profile for glased sections  
Material: Anodised Aluminum  
Lenght: 7000 mm

**Factory price:** 86.00 € excl. VAT / piece

**Weight:** 0.00 kg **Shipping class:** Dłużyca

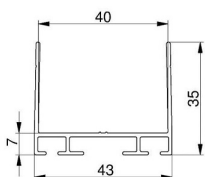
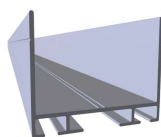


### TOP / BOTTOM PROFILE H=35 MM

**ARTICLE:** 6090

Aluminium profile for 40mm panels of sectional door glazed sections  
 Material: Not anodised Aluminium  
 Length: 6090 mm

**Factory price:** 27.49 € excl. VAT / piece  
**Weight:** 2.65 kg **Shipping class:** Dłużyca

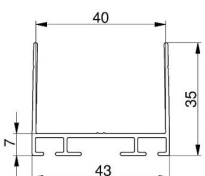
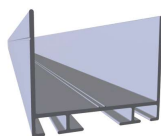


### TOP / BOTTOM PROFILE H=35 MM BLACK

**ARTICLE:** R9011-6090

Aluminium profile for 40mm panels of sectional door glazed sections  
 Material: Not anodised Aluminium  
 Length: 6090 mm  
 color: RAL9011

**Factory price:** 27.49 € excl. VAT / piece  
**Weight:** 2.65 kg **Shipping class:** Dłużyca

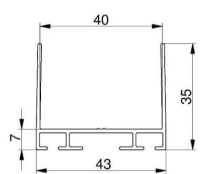
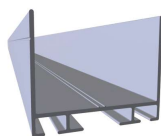


### TOP / BOTTOM PROFILE H=35 MM

**ARTICLE:** 5050

Aluminium profile for 40mm panels of sectional door glazed sections  
 Material: Not anodised Aluminium  
 Length: 5050mm

**Factory price:** 22.79 € excl. VAT / piece  
**Weight:** 2.2 kg **Shipping class:** Dłużyca

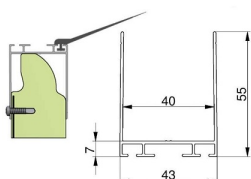
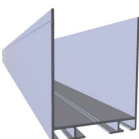


### TOP / BOTTOM PROFILE H=35 MM

**ARTICLE:** 4040

Aluminium profile for 40mm panels of sectional door glazed sections  
 Material: Not anodised Aluminium  
 Length: 4040 mm

**Factory price:** 18.24 € excl. VAT / piece  
**Weight:** 1.76 kg **Shipping class:** Dłużyca

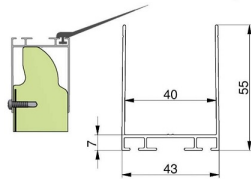
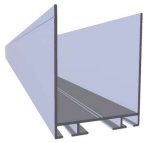


### TOP / BOTTOM PROFILE H=55 MM

**ARTICLE:** 6090

Aluminium profile for 40mm panels of sectional door glazed sections  
 Material: Not anodized Aluminium  
 Length: 6090mm

**Factory price:** 30.12 € excl. VAT / piece  
**Weight:** 3.45 kg **Shipping class:** Dłużyca

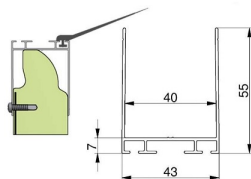
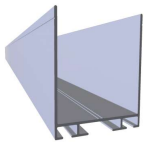


### TOP / BOTTOM PROFILE H=55 MM BLACK

**ARTICLE:** R9011-6090

Aluminium profile for 40mm panels of sectional door glazed sections  
Material: Not anodized Aluminium  
Length: 6090mm  
color: RAL9011

**Factory price:** 30.12 € excl. VAT / piece  
**Weight:** 3.45 kg **Shipping class:** Dłuzyca

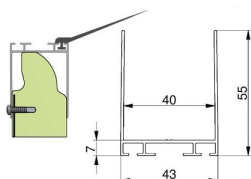
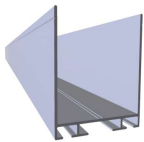


### TOP / BOTTOM PROFILE H=55 MM WHITE

**ARTICLE:** R9016-6090

Aluminium profile for 40mm panels of sectional door glazed sections  
Material: Not anodized Aluminium  
Length: 6090mm  
color: RAL9016

**Factory price:** 30.12 € excl. VAT / piece  
**Weight:** 3.45 kg **Shipping class:** Dłuzyca

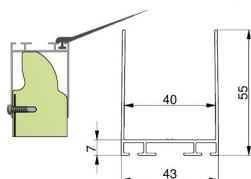
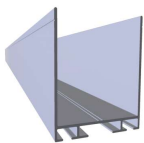


### TOP / BOTTOM PROFILE H=55 MM

**ARTICLE:** 5050

Aluminium profile for 40mm panels of sectional door glazed sections  
Material: Not anodized Aluminium  
Length: 5050mm

**Factory price:** 25.49 € excl. VAT / piece  
**Weight:** 2.86 kg **Shipping class:** Dłuzyca

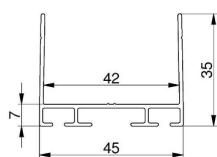
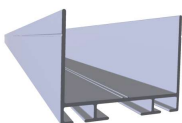


### TOP / BOTTOM PROFILE H=55 MM

**ARTICLE:** 4040

Aluminium profile for 40mm panels of sectional door glazed sections  
Material: Not anodized Aluminium  
Length: 4040mm

**Factory price:** 20.38 € excl. VAT / piece  
**Weight:** 2.29 kg **Shipping class:** Dłuzyca



### TOP / BOTTOM PROFILE 42 MM, H=35 MM

**ARTICLE:** 6090

Profile for 42mm panel for sectional garage and industrial doors  
Material: Not anodized Aluminium  
Length: 6090mm

**Factory price:** 31.53 € excl. VAT / piece  
**Weight:** 2.72 kg **Shipping class:** Dłuzyca

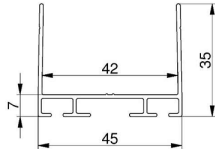
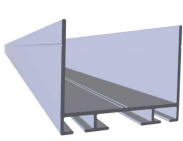
### TOP / BOTTOM PROFILE 42 MM, H=35 MM

**ARTICLE:** 5050

Profile for 42mm panel for sectional garage and industrial doors  
Material: Not anodized Aluminium  
Length: 5050mm

**Factory price:** 26.16 € excl. VAT / piece

**Weight:** 2.26 kg **Shipping class:** Dłużyca



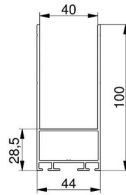
### TOP / BOTTOM PROFILE H=100 MM

**ARTICLE:** 6090

Aluminium profile for 40mm panels of sectional door glazed sections  
Material: Aluminium  
Length: 6090 mm

**Factory price:** 115.00 € excl. VAT / piece

**Weight:** 2.65 kg **Shipping class:** Dłużyca



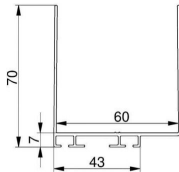
### TOP / BOTTOM PROFILE FOR 60MM PANELS

**ARTICLE:** 6090

Aluminium profile for 60mm sectional door panels  
Material: Aluminium  
Length: 6090 mm

**Factory price:** 39.49 € excl. VAT / piece

**Weight:** 4.87 kg **Shipping class:** Dłużyca



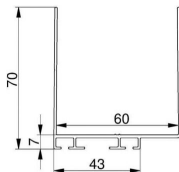
### TOP / BOTTOM PROFILE FOR 60MM PANELS

**ARTICLE:** 5050

Aluminium profile for 60mm sectional door panels  
Material: Aluminium  
Length: 5050 mm

**Factory price:** 32.46 € excl. VAT / piece

**Weight:** 4.04 kg **Shipping class:** Dłużyca



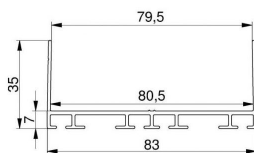
### TOP / BOTTOM PROFILE FOR 80MM PANELS

**ARTICLE:** 6090

Aluminium profile for 80mm sectional door panels  
Material: Not anodized Aluminium  
Length: 6090 mm

**Factory price:** 34.82 € excl. VAT / piece

**Weight:** 4.57 kg **Shipping class:** Dłużyca



## TOP / BOTTOM PROFILE FOR 80MM PANELS

**ARTICLE:** 4040

Aluminium profile for 80mm sectional door panels  
Material: Not-anodised Aluminium  
Length: 4040 mm

**Factory price:** 0.00 € excl. VAT / piece

**Weight:** 3.03 kg **Shipping class:** Dłużyca

## TOP / BOTTOM PROFILE H=67 MM

**ARTICLE:** 20104

Profile for 40-42mm panel in sectional doors  
Material: Not anodized Aluminium  
Length: 6090 mm

**Factory price:** 0.00 € excl. VAT / piece

**Weight:** 2.92 kg **Shipping class:** Dłużyca

## ALU BOTTOM L-PROFILE H=67-15 PAN=40 BLACK L=6090

**ARTICLE:** R9011-6090

Aluminum bottom / top profile, for 40mm thick panels.  
Suitable for rubber seals: 80019, 80042, 80045, 825100 and top seal 825101.

**Factory price:** 33.85 € excl. VAT / piece

**Weight:** 3.25 kg **Shipping class:** Dłużyca

## ALU TOP U-PROFILE H=35-15 PAN=40 MILL L=6090

**ARTICLE:** 6090

U-profile suitable for 40 mm top panels. This profile is placed over the sawn off top panel.  
Alternative: 820100.

**Factory price:** 33.85 € excl. VAT / piece

**Weight:** 1.77 kg **Shipping class:** Dłużyca

## BOTTOM PROFILE FOR PASS DOOR

**ARTICLE:** 3400

Aluminum bottom profile installed on service door leaf, for use with low threshold profile 875000 and bottom seal 875030. Suitable for 40mm panels.

Material: Anodised aluminum

Length: L=3400mm

**Factory price:** 11.36 € excl. VAT / piece

**Weight:** 3 kg **Shipping class:** Dłużyca