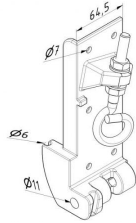


BOTTOM ROLLER BRACKETS



BOTTOM ROLLER BRACKET WITH HOOK FOR CABLE

ARTICLE: 5032.1

Bottom roller bracket with hook for cable used in garage and industrial doors.

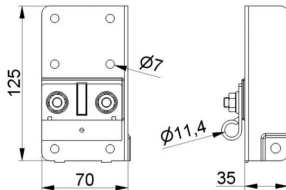
Material: Aluminium

Max door weight: 600 kg

It can be installed with cable slack switch.

Factory price: 15.00 € excl. VAT / piece

Weight: 1 kg **Shipping class:** Standard



BOTTOM CORNER ROLLER BRACKET

ARTICLE: 25052

Bottom corner roller bracket for garage doors

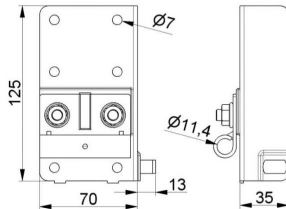
Material: Galvanised steel

Max door weight: 165 kg

Equipped with separate 11mm roller holder

Factory price: 9.00 € excl. VAT / piece

Weight: 0.74 kg **Shipping class:** Standard



BOTTOM CORNER BRACKET T

ARTICLE: 5057

Bottom corner bracket T for sectional doors and truck doors

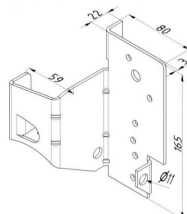
Equipped with separate 11mm roller holder

Material: Galvanised steel

Max door weight: 165 kg

Factory price: 6.50 € excl. VAT / piece

Weight: 0.74 kg **Shipping class:** Standard



BOTTOM CORNER BRACKET FOR SECTIONAL DOORS WITH LOW LINTEL

ARTICLE: 5255.1

Bottom corner bracket for sectional doors with low lintel and cables outside tracks.

Material: Galvanised steel

Max door weight: 100 kg

Factory price: 9.00 € excl. VAT / piece

Weight: 1.14 kg **Shipping class:** Standard

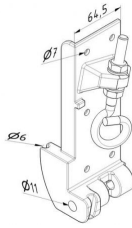


HOOK FOR CABLE EYE ATTACHMENT

ARTICLE: 5336

Material: Galvanised steel
One set includes: hook, 2 nuts and 2 washers

Factory price: 2.60 € excl. VAT / piece
Weight: 0.13 kg **Shipping class:** Standard

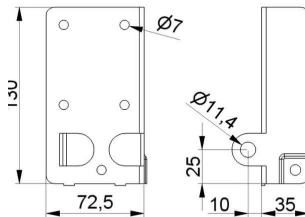


BOTTOM ROLLER BRACKET WITH HOOK FOR CABLE

ARTICLE: 93561

Bottom roller bracket with hook for cable
Material: Aluminium
Max door weight: 600 kg
can be mounted with 25072

Factory price: 15.00 € excl. VAT / piece
Weight: 1.02 kg **Shipping class:** Standard

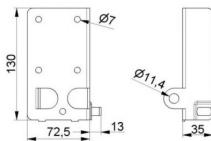


BOTTOM CORNER ROLLER BRACKET

ARTICLE: 5051

Bottom corner roller bracket for garage doors and truck doors
Material: Galvanised steel
Max door weight: 165 kg

Factory price: 5.20 € excl. VAT / piece
Weight: 0.256 kg **Shipping class:** Standard

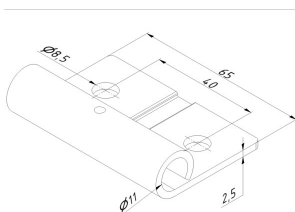


BOTTOM CORNER ROLLER T-BRACKET

ARTICLE: 5056.1

Bottom corner roller T-bracket
Material: Galvanised steel
Max door weight: 165 kg

Factory price: 4.87 € excl. VAT / piece
Weight: 0.52 kg **Shipping class:** Standard

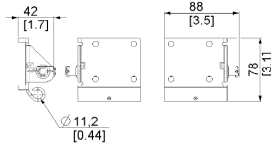
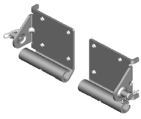


ROLLER CARRIER 11 MM RAL9016

ARTICLE: 9016

Zinc plated roller carrier for 11 mm rollers.
Suitable for mounting on side hinges: 25005, 25234, 25334, 25634, 25734, 230110, 230220.

Factory price: 9.50 € excl. VAT / piece
Weight: 0.09 kg **Shipping class:** Standard



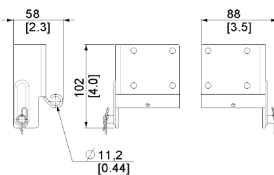
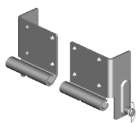
ERSC70 RESIDENTIAL STEEL BOTTOM BRACKET REAR MOUNT

ARTICLE: 00099

material: zinc plated steel
thickness: 3.0mm
rating: 165kg

Factory price: 9.50 € excl. VAT / piece

Weight: 0.5 kg **Shipping class:** Standard



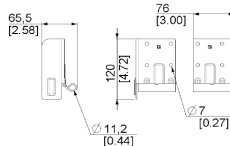
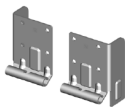
ERSC RESIDENTIAL STEEL BOTTOM BRACKET

ARTICLE: 94197

material: zinc plated steel
thickness: 3.0mm
rating: 195kg
includes: 2x rue rings, 2x pins

Factory price: 9.50 € excl. VAT / piece

Weight: 0.72 kg **Shipping class:** Standard



ERSX RESIDENTIAL STEEL BOTTOM BRACKET

ARTICLE: 12188

material: zinc plated steel
thickness: 2.5mm
rating: 120kg / door

Factory price: 9.50 € excl. VAT / piece

Weight: 0.55 kg **Shipping class:** Standard