

## TOP ROLLER BRACKET NOVOFERM

**ARTICLE:** 5412

Top roller bracket Novoferm  
Material: Galvanised steel  
For use with Novoferm rollers

**Factory price:** 10.00 € excl. VAT / piece  
**Weight:** 0.24 kg **Shipping class:** Standard

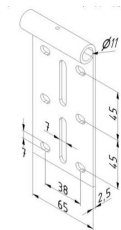


## TOP ROLLER BRACKET LHR NOVOFERM

**ARTICLE:** 5413

Top roller bracket Novoferm for sectional doors with low lintel  
Material: Galvanised steel  
For use with Novoferm rollers

**Factory price:** 9.50 € excl. VAT / piece  
**Weight:** 0.16 kg **Shipping class:** Standard

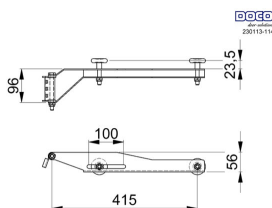
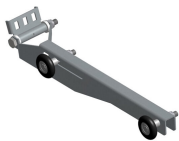


## TOP ROLLER BRACKET

**ARTICLE:** 5043.1

Adjustable top roller for sectional doors with low lintel  
Material: Galvanised steel  
Do rolek z osią 11mm.

**Factory price:** 1.10 € excl. VAT / piece  
**Weight:** 0.00 kg **Shipping class:** Standard

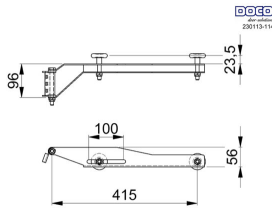


## TOP ROLLER CARRIER LHI LEFT

**ARTICLE:** 30113

Double top roller carrier, suitable for our Low Headroom Industry (LHI) system with a lintel height of 200-310 mm. This top roller carrier can be mounted to top roller carrier bracket with article number 230115.  
Application: Low Headroom Industry (LHI)  
Material: Zinc plated steel

**Factory price:** 9.50 € excl. VAT / piece  
**Weight:** 1.18 kg **Shipping class:** Standard



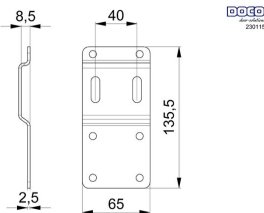
## TOP ROLLER CARRIER LHI RIGHT

**ARTICLE:** 30114

Double top roller carrier, suitable for our Low Headroom Industry (LHI) system with a lintel height of 200-310 mm. This top roller carrier can be mounted to top roller carrier bracket with article number 230115. Application: Low Headroom Industry (LHI) Material: Zinc plated steel

**Factory price:** 9.50 € excl. VAT / piece

**Weight:** 1.18 kg **Shipping class:** Standard



## TOP ROLLER CARRIER FOR 230113-230114

**ARTICLE:** 30115

Top roller carrier bracket suitable for our Low Headroom Industry (LHI) system. This bracket makes it possible to connect top roller carrier 230113-114 to the top panel.

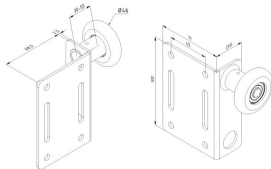
Universal design for both left and right mounting.

Application: Low Headroom Industry (LHI)

Material: Zinc plated steel

**Factory price:** 9.50 € excl. VAT / piece

**Weight:** 0.17 kg **Shipping class:** Standard



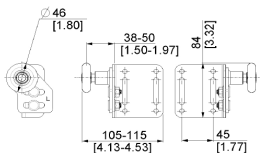
## UNIVERSAL TOP ROLLER, SELF ALIGNING, NON ADJUSTABLE

**ARTICLE:** 30130

Standard top roller for the HOME system. More lateral adjustability and improved hole pattern than its predecessor 25003.

**Factory price:** 9.50 € excl. VAT / piece

**Weight:** 0.53 kg **Shipping class:** Standard



## ERSC TOP ROLLER BRACKET RESIDENTIAL

**ARTICLE:** 94195

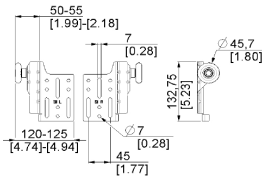
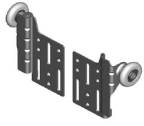
material: zinc plated steel

thickness: 2.5mm (carrier), 4.0mm holder

mounting holes dia: 7.0mm

**Factory price:** 9.50 € excl. VAT / piece

**Weight:** 0.712 kg **Shipping class:** Standard



## ERSX TOP ROLLER BRACKET RESIDENTIAL

**ARTICLE:** 12258

material: zinc lated steel  
thickness: 2.5mm  
mounting holes dia: 7.0mm

**Factory price:** 9.50 € excl. VAT / piece

**Weight:** 0.606 kg **Shipping class:** Standard