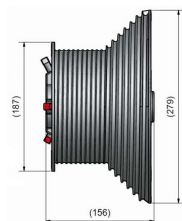


## HIGH LIFT



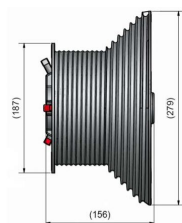
### CABLE DRUM M162-4165 HL

**ARTICLE:** 10040

Cable drum for industrial door with high lift  
Material: Aluminium  
Max weight: 728 kg  
Max cable diameter: 6 mm  
Shaft diameter : 25,4mm (1 inch)  
Maks. HL: 4190mm at 1/2 safety winding (2900mm at 2 safety windings)  
Offset: 152mm

**Factory price:** 0.00 € excl. VAT / piece

**Weight:** 6.8 kg **Shipping class:** Standard



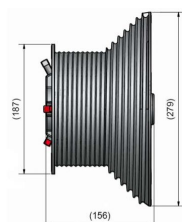
### CABLE DRUM M162-4165 HL LEFT

**ARTICLE:** 18266

Cable drum for industrial door with high lift  
Material: Aluminium  
Max weight: 728 kg  
Max cable diameter: 6 mm  
Shaft diameter : 25,4mm (1 inch)  
Maks. HL: 4190mm at 1/2 safety winding (2900mm at 2 safety windings)  
Offset: 152mm

**Factory price:** 0.00 € excl. VAT / piece

**Weight:** 3.27 kg **Shipping class:** Standard



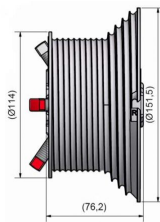
### CABLE DRUM M162-4165 HL RIGHT

**ARTICLE:** 18267

Cable drum for industrial door with high lift  
Material: Aluminium  
Max weight: 728 kg  
Max cable diameter: 6 mm  
Shaft diameter : 25,4mm (1 inch)  
Maks. HL: 4190mm at 1/2 safety winding (2900mm at 2 safety windings)  
Offset: 152mm

**Factory price:** 0.00 € excl. VAT / piece

**Weight:** 3.27 kg **Shipping class:** Standard

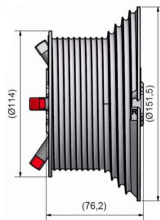


### CABLE DRUM M102-1375 HL

**ARTICLE:** 10050

Cable drum for industrial door with high lift  
Material: Aluminium  
Max weight: 250 kg  
Max cable diameter: 4 mm  
Shaft diameter : 25,4mm (1 inch)  
Maks. HL:1375mm at 1/2 safety winding (740mm at 2 safety windings)  
Offset: 86mm

**Factory price:** 13.76 € excl. VAT / piece  
**Weight:** 1.03 kg **Shipping class:** Standard

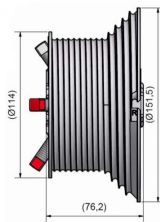


### CABLE DRUM M102-1375 HL LEFT

**ARTICLE:** 95456

Cable drum for industrial door with high lift  
Material: Aluminium  
Max weight: 250 kg  
Max cable diameter: 4 mm  
Shaft diameter : 25,4mm (1 inch)  
Maks. HL:1375mm at 1/2 safety winding (740mm at 2 safety windings)  
Offset: 86mm

**Factory price:** 13.76 € excl. VAT / piece  
**Weight:** 0.493 kg **Shipping class:** Standard

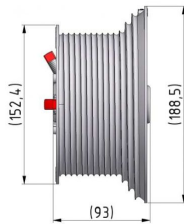


### CABLE DRUM M102-1375 HL RIGHT

**ARTICLE:** 95458

Cable drum for industrial door with high lift  
Material: Aluminium  
Max weight: 250 kg  
Max cable diameter: 4 mm  
Shaft diameter : 25,4mm (1 inch)  
Maks. HL:1375mm at 1/2 safety winding (740mm at 2 safety windings)  
Offset: 86mm

**Factory price:** 13.76 € excl. VAT / piece  
**Weight:** 0.493 kg **Shipping class:** Standard



## CABLE DRUM M134-1375 HL

**ARTICLE:** 10060

Cable drum for industrial door with high lift

Material: Aluminium

Max weight: 454 kg

Max cable diameter: 5 mm

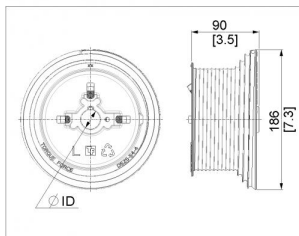
Shaft diameter : 25,4mm (1 inch)

Maks. HL:1380mm at 1/2 safety winding (570mm at 2 safety windings)

Offset: 111mm

**Factory price:** 27.41 € excl. VAT / piece

**Weight:** 1.82 kg **Shipping class:** Standard



## CABLE DRUM M134-1375 HL LEFT

**ARTICLE:** 03945

Cable drum for industrial door with high lift LEFT

Material: Aluminium

Max weight: 454 kg

Max cable diameter: 5 mm

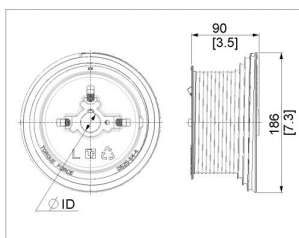
Shaft diameter : 25,4mm (1 inch)

Maks. HL:1380mm at 1/2 safety winding (570mm at 2 safety windings)

Offset: 111mm

**Factory price:** 11.50 € excl. VAT / piece

**Weight:** 0.822 kg **Shipping class:** Standard



## CABLE DRUM M134-1375 HL RIGHT

**ARTICLE:** 03950

Cable drum for industrial door with high lift RIGHT

Material: Aluminium

Max weight: 454 kg

Max cable diameter: 5 mm

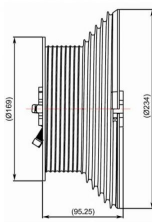
Shaft diameter : 25,4mm (1 inch)

Maks. HL:1380mm at 1/2 safety winding (570mm at 2 safety windings)

Offset: 111mm

**Factory price:** 11.50 € excl. VAT / piece

**Weight:** 0.822 kg **Shipping class:** Standard



## CABLE DRUM M146-3050 HL

**ARTICLE:** 10070

Cable drum for industrial door with high lift

Material: Aluminium

Max weight: 454 kg

Max cable diameter: 5 mm

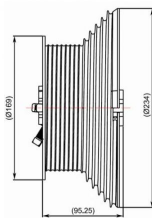
Shaft diameter : 25,4mm (1 inch)

Maks. HL:2997mm at 1/2 safety winding (1960mm at 2 safety windings)

Offset: 152mm

**Factory price:** 33.70 € excl. VAT / piece

**Weight:** 2.27 kg **Shipping class:** Standard



## CABLE DRUM M146-3050 HL LEFT

**ARTICLE:** 18282

Cable drum for industrial door with high lift

Material: Aluminium

Max weight: 454 kg

Max cable diameter: 5 mm

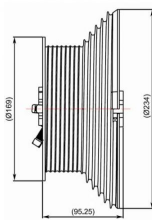
Shaft diameter : 25,4mm (1 inch)

Maks. HL:2997mm at 1/2 safety winding (1960mm at 2 safety windings)

Offset: 152mm

**Factory price:** 33.70 € excl. VAT / piece

**Weight:** 1.15 kg **Shipping class:** Standard



## CABLE DRUM M146-3050 HL RIGHT

**ARTICLE:** 18284

Cable drum for industrial door with high lift

Material: Aluminium

Max weight: 454 kg

Max cable diameter: 5 mm

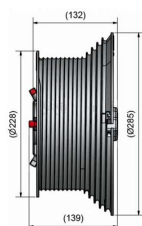
Shaft diameter : 25,4mm (1 inch)

Maks. HL:2997mm at 1/2 safety winding (1960mm at 2 safety windings)

Offset: 152mm

**Factory price:** 33.70 € excl. VAT / piece

**Weight:** 1.15 kg **Shipping class:** Standard

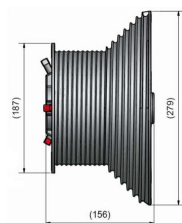


## CABLE DRUM M203-3050 HL

**ARTICLE:** 10080

Cable drum for industrial door with high lift  
 Material: Aluminium  
 Max weight: 1000 kg  
 Max cable diameter: 6 mm  
 Shaft diameter : 25,4mm (1 inch)  
 Maks. HL:3028mm at 1/2 safety winding (1800mm at 2 safety windings)  
 Offset: 152mm

**Factory price:** 102.88 € excl. VAT / piece  
**Weight:** 6.89 kg **Shipping class:** Standard

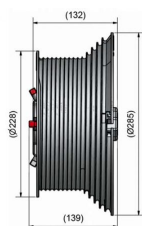


## CABLE DRUM M162-4165 HL

**ARTICLE:** 11104

Cable drum for industrial door with high lift  
 Material: Aluminium  
 Max weight: 728 kg  
 Max cable diameter: 6 mm  
 Shaft diameter : 31,75mm(1,25 inch)  
 Maks. HL:4200mm at 1/2 safety winding (2940mm at 2 safety windings)  
 Offset: 152mm

**Factory price:** 0.00 € excl. VAT / piece  
**Weight:** 6.44 kg **Shipping class:** Standard



## CABLE DRUM M203-3050 HL

**ARTICLE:** 11108

Cable drum for industrial door with high lift  
 Material: Aluminium  
 Max weight: 1000 kg  
 Max cable diameter: 6 mm  
 Shaft diameter : 31,75mm(1,25 inch)  
 Maks. HL:3140mm at 1/2 safety winding (1900mm at 2 safety windings)  
 Offset: 152mm

**Factory price:** 93.25 € excl. VAT / piece  
**Weight:** 7.34 kg **Shipping class:** Standard