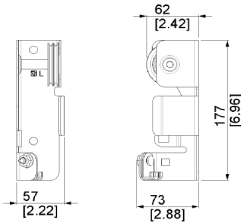


## CABLE PULLEYS



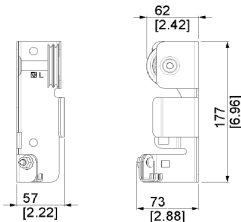
### ERSX DOUBLE PULLEY BRACKET RIGHT

**ARTICLE:** 12278

material: black nylon  
cable diameter: max 3mm  
radial load: max 120kg  
construction: injected with precision bearing 6200ZZ

**Factory price:** € excl. VAT / piece

**Weight:** 0.532 kg **Shipping class:** Standard



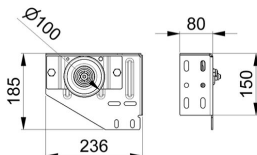
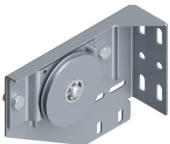
### ERSX DOUBLE PULLEY BRACKET LEFT

**ARTICLE:** 12279

material: black nylon  
cable diameter: max 3mm  
radial load: max 120kg  
construction: injected with precision bearing 6200ZZ

**Factory price:** € excl. VAT / piece

**Weight:** 0.532 kg **Shipping class:** Standard



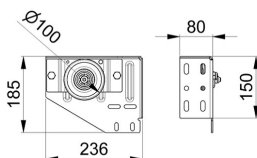
### LHI PULLEY BRACKET LEFT

**ARTICLE:** 95100

LHI cable pulley suitable for 3, 4 and 5 mm cables.  
Integrated connection of angle 290030 and C-profile 220020.  
Application: Low Headroom Industry (LHI)  
Material: Zinc plated steel Left.

**Factory price:** € excl. VAT / piece

**Weight:** 2.13 kg **Shipping class:** Standard



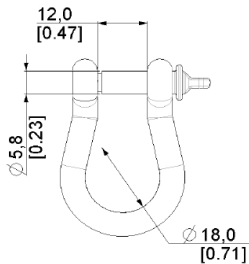
### LHI PULLEY BRACKET RIGHT

**ARTICLE:** 95101

LHI cable pulley suitable for 3, 4 and 5 mm cables.  
Integrated connection of angle 290030 and C-profile 220020.  
Application: Low Headroom Industry (LHI)  
Material: Zinc plated steel

**Factory price:** € excl. VAT / piece

**Weight:** 2.15 kg **Shipping class:** Standard



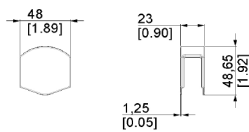
## SHACKLE 6MM

**ARTICLE:** 89255

material: galvanized steel

**Factory price:** € excl. VAT / piece

**Weight:** 0.029 kg **Shipping class:** Standard



## ERSX MOVING PULLEY PROTECTIVE COVER

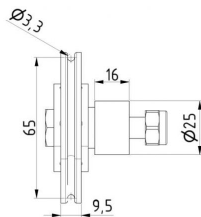
**ARTICLE:** 12293

material: black nylon

use with eRSX extension spring assembly

**Factory price:** € excl. VAT / piece

**Weight:** 0.013 kg **Shipping class:** Standard



## CABLE PULLEY WITH SPACER

**ARTICLE:** 5258.1

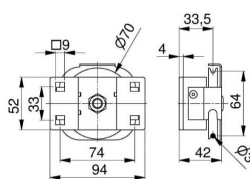
Material: Nylon

Max cable diameter: 3 mm

Max door weight: 162 kg / pair

**Factory price:** 4.60 € excl. VAT / piece

**Weight:** 0.22 kg **Shipping class:** Standard



## STEEL CABLE PULLEY 60 MM WITH METAL COVER

**ARTICLE:** 5270

Universal cable pulley 60 mm with metal cover

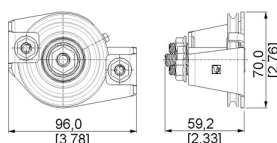
Universal for left and right side

Material: Galvanised steel

Max cable diameter: 3 mm

**Factory price:** 14.50 € excl. VAT / piece

**Weight:** 0.554 kg **Shipping class:** Standard



## STEEL CABLE PULLEY 70 MM WITH METAL COVER

**ARTICLE:** 00097

Steel cable pulley ( left + right )70mm with metal cover

Material: Galvanised steel

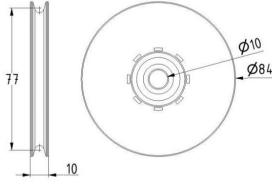
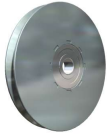
Max load: 180kg

Max cable diameter: 3 mm

**Factory price:** 16.00 € excl. VAT / piece

**Weight:** 0.85 kg **Shipping class:** Standard

## STEEL CABLE PULLEY 80 MM

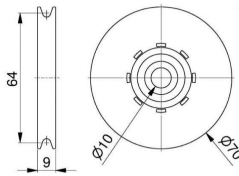


**ARTICLE:** 5272

Steel cable pulley 80mm  
Material: Galvanised steel  
Max cable diameter: 4 mm

**Factory price:** 8.50 € excl. VAT / piece  
**Weight:** 0.348 kg **Shipping class:** Standard

## STEEL CABLE PULLEY 60 MM

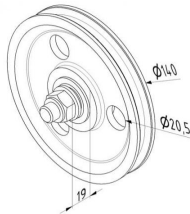


**ARTICLE:** 5273

Steel cable pulley 60mm  
Material: Galvanised steel  
Max cable diameter: 3 mm

**Factory price:** 6.70 € excl. VAT / piece  
**Weight:** 0.218 kg **Shipping class:** Standard

## CAST STEEL CABLE PULLEY

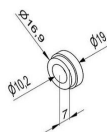


**ARTICLE:** 5358.1

Material: Cast steel  
Includes screws, nuts and spacers  
Max cable diameter: 6 mm  
Max door weight: 330 kg per pulley

**Factory price:** 14.00 € excl. VAT / piece  
**Weight:** 1.15 kg **Shipping class:** Standard

## REDUCING RING

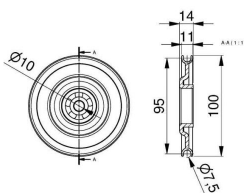


**ARTICLE:** 95105

Reducing ring 17-10mm  
Material: Galvanised steel  
For use with art. 295103

**Factory price:** 0.70 € excl. VAT / piece  
**Weight:** 0.01 kg **Shipping class:** Standard

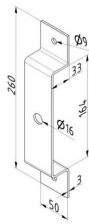
## CABLE STEEL PULLEY 100MM



**ARTICLE:** 95102

Cable pulley 100mm with bearing  
Material: Galvanised steel  
Max cable diameter: 5 mm

**Factory price:** 8.00 € excl. VAT / piece  
**Weight:** 0.28 kg **Shipping class:** Standard

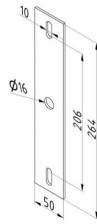


## BENT PULLEY BRACKET

**ARTICLE:** 5360

Bent pulley bracket  
Material: Galvanised steel

**Factory price:** 4.30 € excl. VAT / piece  
**Weight:** 0.34 kg **Shipping class:** Standard

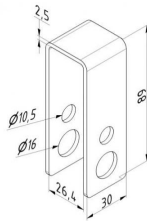


## FLAT PULLEY BRACKET

**ARTICLE:** 5361

Flat pulley bracket  
Material: Galvanised steel  
For use with art. 25360

**Factory price:** 2.30 € excl. VAT / piece  
**Weight:** 0.28 kg **Shipping class:** Standard



## STEEL CABLE PULLEY HOLDER

**ARTICLE:** 5365

Steel cable pulley bracket  
Prevents cable going off the pulley  
Material: Galvanised steel 2,5mm  
With holes  $\varnothing=16$ mm and  $\varnothing=10,5$ mm  
use together with 13040/13041, 25358, 25458

**Factory price:** 1.50 € excl. VAT / piece  
**Weight:** 0.11 kg **Shipping class:** Standard