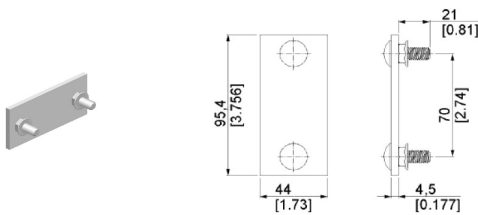


FASTENERS

Connecting materials are a very important element of the gate construction. They are responsible for the positioning of the components and ensure the highest quality of connections.



CONNECTION PLATE 95 X 44 X 4.5MM WITH 2 BOLTS M8X25MM FOR C PROFILES

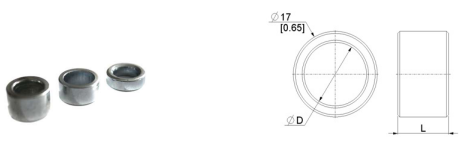
ARTICLE: 84174

Connection plate 95x44x4.5mm with 2 bolts M8x25mm at 70mm distance

Material: galvanised steel 4.5mm
For connecting C-profiles 53x28mm

Factory price: 1.50 € excl. VAT / piece

Weight: 0.157 kg **Shipping class:** Standard



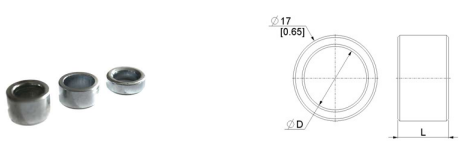
ROLLER SPACER 11MM H=5,0MM

ARTICLE: 86121

Material: Galvanised steel
Outside diameter: 17 mm
Spacer height : 5mm

Factory price: 0.20 € excl. VAT / piece

Weight: 0.004 kg **Shipping class:** Standard



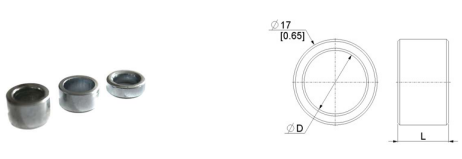
ROLLER SPACER 11MM H=7,5MM

ARTICLE: 86120

Material: Galvanised steel
External diameter: 17 mm
Spacer height : 7,5 mm

Factory price: 0.30 € excl. VAT / piece

Weight: 0.005 kg **Shipping class:** Standard



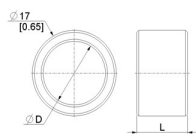
ROLLER SPACER 11MM H=10,0MM

ARTICLE: 86118

Material: Galvanised steel
External diameter: 17 mm
Spacer height : 10 mm

Factory price: 0.30 € excl. VAT / piece

Weight: 0.008 kg **Shipping class:** Standard

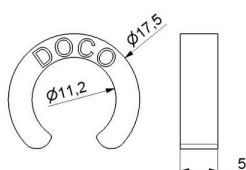


ROLLER SPACER 12MM H=5,0MM

ARTICLE: 5640

Material: Galvanised steel
 External diameter: 17 mm
 Spacer height : 5 mm

Factory price: 0.20 € excl. VAT / piece
Weight: 0.01 kg **Shipping class:** Standard

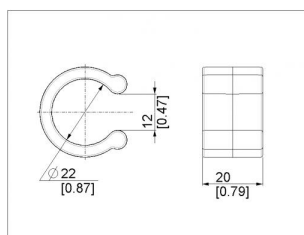


PLASTIC SPACER FOR ROLLER 11 MM

ARTICLE: 50001

Material: POM
 Roller diameter: 11,0mm
 H=5,0mm

Factory price: 0.20 € excl. VAT / piece
Weight: 0.001 kg **Shipping class:** Standard

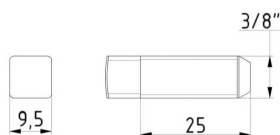
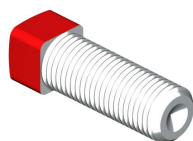


PLASTIC SPACER FOR SHAFT 25,4MM

ARTICLE: 98273

Plastic spacer for garage door shaft 25,4mm
 Material: Nylon
 Height: 20mm

Factory price: 0.30 € excl. VAT / piece
Weight: 0.003 kg **Shipping class:** Standard

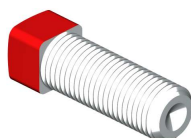


CUPPOINT BOLT 3/8-25MM

ARTICLE: 4001

Bolt for fixing cable drums, spring plugs and couplings on the shafts
 Material: Galvanised steel

Factory price: 0.40 € excl. VAT / piece
Weight: 0.01 kg **Shipping class:** Standard

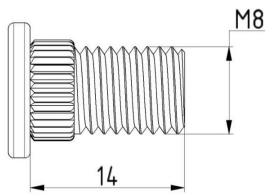


CUPPOINT BOLT 3/8 -32MM

ARTICLE: 4002

Bolt for fixing cable drums, spring plugs and couplings on the shafts
 Material: Galvanised steel

Factory price: 0.30 € excl. VAT / piece
Weight: 0.02 kg **Shipping class:** Standard

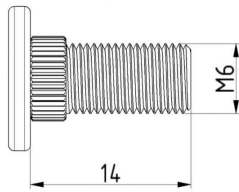


FLAT HEAD RIBBED NECK BOLT M8X14MM

ARTICLE: 4010

Flat head ribbed neck bolt for linking tracks of garage doors
Material: Galvanised steel

Factory price: 19.00 € excl. VAT / piece
Weight: 0.01 kg **Shipping class:** Standard

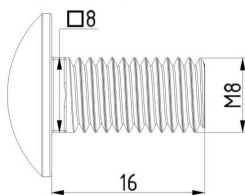


FLAT HEAD RIBBED NECK TRACK BOLT M6X14MM

ARTICLE: 4011

Flat headribbed neck bolt for linking tracks of garage doors
Material: Galvanised steel

Factory price: 8.50 € excl. VAT / piece
Weight: 0.46 kg **Shipping class:** Standard

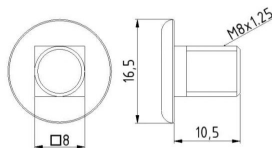


ROUND HEAD LOCK BOLT M8X16MM

ARTICLE: 4016

Round head lock bolt for roller carriages
Material: Galvanised steel

Factory price: 11.50 € excl. VAT / piece
Weight: 0.01 kg **Shipping class:** Standard

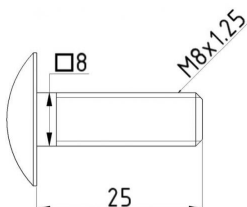
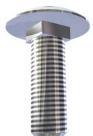


SHORT FLAT HEAD LOCK BOLT M8X10,5MM

ARTICLE: 4024

Flat head lock bolt for linking tracks of garage doors
Material: Galvanised steel

Factory price: 12.00 € excl. VAT / piece
Weight: 0.01 kg **Shipping class:** Standard

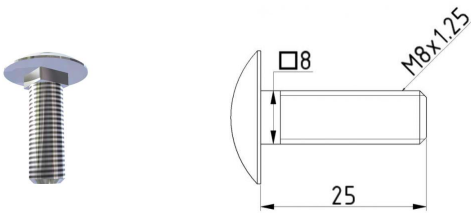


MUSHROOR HEAD LOCK BOLT M8X25MM

ARTICLE: 4021

Mushroor head lock bolt for garage door tracks
Material: Galvanised steel

Factory price: 15.50 € excl. VAT / piece
Weight: 0.02 kg **Shipping class:** Standard

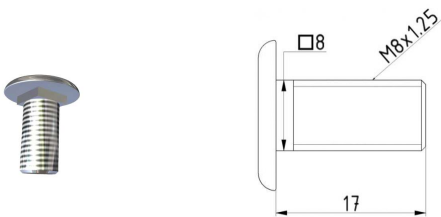


MUSHROOR HEAD LOCK BOLT M8X25MM

ARTICLE: 45992

Mushroor head lock bolt for garage door tracks
Material: Galvanised steel

Factory price: 15.50 € excl. VAT / piece
Weight: 0.02 kg **Shipping class:** Standard



MUSHROOR HEAD LOCK BOLT M8X17MM

ARTICLE: 4023P

Mushroor head lock bolt for linking garage door tracks
Material: Galvanised steel

Factory price: 6.00 € excl. VAT / piece
Weight: 1 kg **Shipping class:** Standard

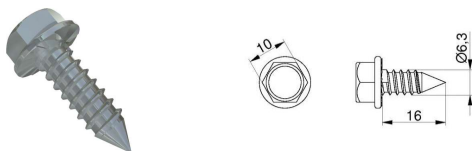


SELFDRILLING SCREW 4,2X13MM

ARTICLE: 13015P

Selfdrilling screw with Phillips pan head screw for garage doors
Material: Galvanised steel

Factory price: 0.03 € excl. VAT / piece
Weight: 0.001 kg **Shipping class:** Standard

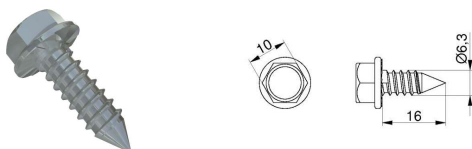


SELF TAPPING HEXAGONAL HEAD M10 FLANGED SCREW 6,3X16MM

ARTICLE: 4020/16P

Self tapping hexagonal flanged screw 6,3x16 hexagonal head M10 for fixing hinges and brackets to door panels
Material: Galvanised steel

Factory price: 4.10 € excl. VAT / piece
Weight: 0.5 kg **Shipping class:** Standard

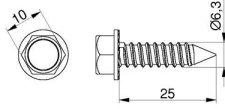


SELF TAPPING HEXAGONAL HEAD M10 FLANGED SCREW 6,3X16MM

ARTICLE: 4020

Self tapping hexagonal flanged screw 6,3x16 hexagonal head M10 for fixing hinges and brackets to door panels
Material: Galvanised steel

Factory price: 4.10 € excl. VAT / piece
Weight: 0.005 kg **Shipping class:** Standard



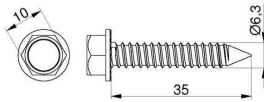
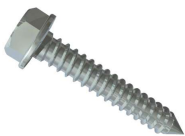
SELF TAPPING HEXAGONAL FLANGED SCREW 6,3X25MM

ARTICLE: 50002.

Self tapping hexagonal flanged screw 6,3x25 hexagonal head M10 for fixing hinges and brackets to door panels
Material: Galvanised steel

Factory price: 0.06 € excl. VAT / piece

Weight: 1 kg **Shipping class:** Standard



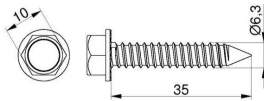
SELF TAPPING HEXAGONAL FLANGED SCREW 6,3X35MM

ARTICLE: 4017

Self tapping hexagonal flanged screw 6,3x35 hexagonal head M10 for fixing hinges and brackets to door panels
Material: Galvanised steel

Factory price: 10.00 € excl. VAT / piece

Weight: 1 kg **Shipping class:** Standard



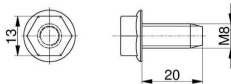
SELF TAPPING HEXAGONAL FLANGED SCREW 6,3X35MM - WHITE

ARTICLE: R9016

Self tapping hexagonal flanged screw 6,3x35 hexagonal head M10 for fixing hinges and brackets to door panels - white
Material: Galvanised steel RAL9016

Factory price: 0.07 € excl. VAT / piece

Weight: 0.01 kg **Shipping class:** Standard



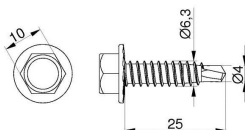
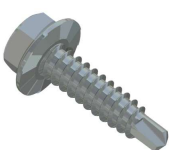
SELF TAPPING HEXAGONAL FLANGED SCREW M8X20

ARTICLE: 50102

Self tapping hexagonal flanged screw M8x20mm with hexagonal head M13
Material: Galvanised steel

Factory price: 30.00 € excl. VAT / piece

Weight: 0.015 kg **Shipping class:** Standard



SELF DRILLING SCREW 6,3X25MM

ARTICLE: 4019

Self drilling screw 6,3x25mm with hexagonal flange head M10 with drill Ø4 for fixing hinges to door panels
Material: Galvanised steel

Factory price: 9.50 € excl. VAT / piece

Weight: 1 kg **Shipping class:** Standard

SELF DRILLING SCREW 6,3X25MM WHITE

ARTICLE: R9016

Self drilling screw 6,3x25mm with hexagonal flange head M10 with drill Ø4 for fixing hinges to door panels - white
Material: Galvanised steel RAL9016

Factory price: 0.09 € excl. VAT / piece

Weight: 0.01 kg **Shipping class:** Standard

SELF DRILLING SCREW 6,3X35MM

ARTICLE: 4027

Self drilling screw 6,3x35mm with hexagonal flange head M10 with drill Ø4 for fixing hinges to door panels
Material: Galvanised steel

Factory price: 10.50 € excl. VAT / piece

Weight: 1 kg **Shipping class:** Standard

HEXAGONAL SERRATED FLANGE NUT M6

ARTICLE: 4012

Hexagonal serrated flange nut M6 for garage doors
Material: Galvanised steel

Factory price: 3.40 € excl. VAT / piece

Weight: 1 kg **Shipping class:** Standard

HEXAGONAL SERRATED FLANGE NUT M8

ARTICLE: 4022P

Hexagonal serrated flange nut M8
Material: Galvanised steel

Factory price: 6.70 € excl. VAT / piece

Weight: 1 kg **Shipping class:** Standard

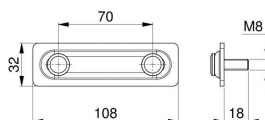
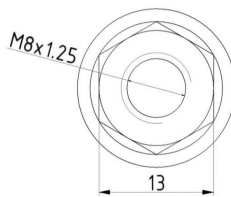
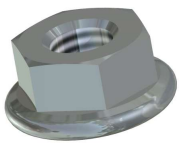
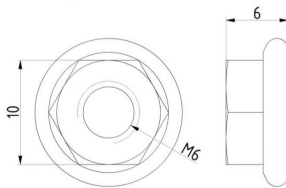
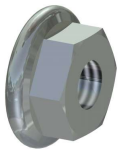
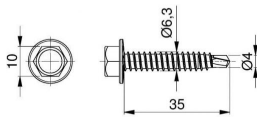
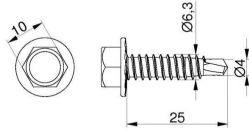
CONNECTION PLATE FOR C-PROFILE / 108X32MM

ARTICLE: 35205

Connection plate 108x32mm with bolts M8x18mm at the distance 70mm from each other
Material: Galvanised steel
For connecting C-profile 40x20mm

Factory price: 1.40 € excl. VAT / piece

Weight: 0.095 kg **Shipping class:** Standard

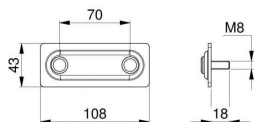
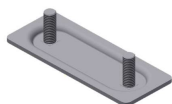


CONNECTION PLATE FOR C-PROFILE / 108X43MM

ARTICLE: 235203

Connection plate 108x43mm with bolts M8x18mm at the distance 70mm from each other
Material: Galvanised steel
Do łączenia profilu C 53x28mm

Factory price: 1.05 € excl. VAT / piece
Weight: 0.13 kg **Shipping class:** Standard

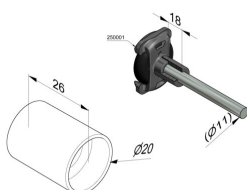


PLASTIC SPACER 11X26,5 MM

ARTICLE: 50003

Application: Residential. HOME-F, HOME-R, HOME-X
Material: ABS Plastic

Factory price: 1.05 € excl. VAT / piece
Weight: 0.01 kg **Shipping class:** Standard

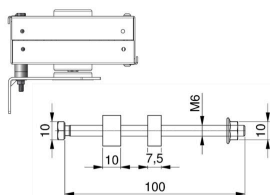
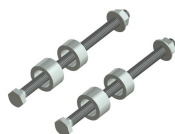


ASSEMBLY KIT FOR CHAIN HOIST 25025

ARTICLE: 50112

Mounting set to assemble chain hoist 25025 to bearing plates 130102, 130103, 130104, 130105, 235210, 235211, 235212 & 235213.

Factory price: 1.05 € excl. VAT / piece
Weight: 0.09 kg **Shipping class:** Standard

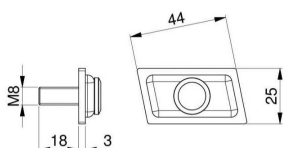


CONNECTION PLATE FOR C-PROFILE 53X28MM / M8

ARTICLE: 35200

Connection plate with bolt M8 for C-profile 53x28mm
Material: Galvanised steel

Factory price: 0.70 € excl. VAT / piece
Weight: 0.05 kg **Shipping class:** Standard

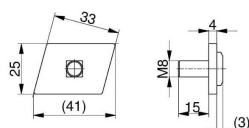


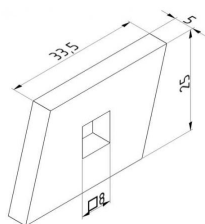
CONNECTION PLATE FOR C-PROFILE 40X20MM / M8

ARTICLE: 35201

Connection plate with bolt M8 for C-profile 40x20mm
Material: Galvanised steel

Factory price: 1.10 € excl. VAT / piece
Weight: 0.03 kg **Shipping class:** Standard





CONNECTION PLATE FOR C-PROFILE 40X20MM / M8

ARTICLE: 4620

Connection plate 33,5x25x5.0mm for C-profile 40x20mm
Material: Galvanised steel

Factory price: 0.50 € excl. VAT / piece

Weight: 0.02 kg **Shipping class:** Standard