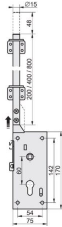


LOCKS AND HANDLES



LOCK SET 200MM LOCK PIN

ARTICLE: 45200

set consists of: a lock box (1 pcs), a doorplate (1 pcs), a door-handle (1 pcs), 200 mm lock pin (1 pcs), slide bars (2 pcs), a set of screws and bolts

colour: zinc white

Factory price: € excl. VAT / piece

Weight: 1.5 kg **Shipping class:** Standard

COMPLETE CYLINDER LOCK

ARTICLE: 5074

Cylinder lock for garage and industrial doors

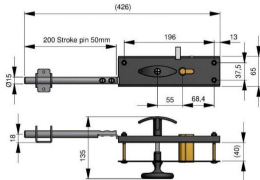
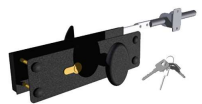
Material: Galvanised steel

Includes: 3 keys and 2 brackets

Throw: 50 mm

Factory price: 66.00 € excl. VAT / piece

Weight: 1.740 kg **Shipping class:** Standard



SHOOT BOLT DELTA

ARTICLE: 5134

Shoot bolt for sectional doors

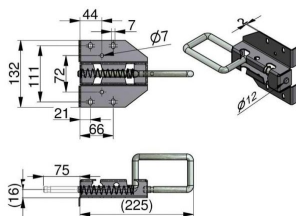
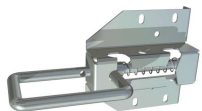
Material: Galvanised steel

Throw: 75 mm

It is possible to attach a lock.

Factory price: 5.20 € excl. VAT / piece

Weight: 0.00 kg **Shipping class:** Standard



EURO CYLINDER LOCK- SYMETRICAL

ARTICLE: 5147

Symmetrical Euro cylinder lock

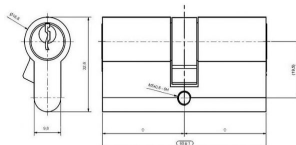
Material: Galvanised steel

Includes 3 keys and fastening screws

can be applied with 280000

Factory price: 13.50 € excl. VAT / piece

Weight: 0.220 kg **Shipping class:** Standard



DOOR CLOSER ASSEMBLY SET FOR PASSDOOR

ARTICLE: 75073

Set of assembly elements- steel plate and profile - for door closer 875072

Factory price: 7.59 € excl. VAT / piece
Weight: 0.49 kg **Shipping class:** Standard

AUTO LATCH

ARTICLE: 25990

Locking system for garage doors
Material: Galvanised steel

Factory price: 1.80 € excl. VAT / piece
Weight: 0.208 kg **Shipping class:** Standard

AUTO LATCH STRIKER

ARTICLE: 09676

Locking system for garage doors
Material: Galvanised steel

Factory price: 0.70 € excl. VAT / piece
Weight: 0.640 kg **Shipping class:** Standard

HANDLE

ARTICLE: 5093.1

Plastic handle for industrial and garage doors
Material: Nylon, Black
includes: black bolts and nuts

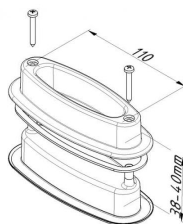
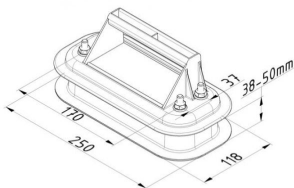
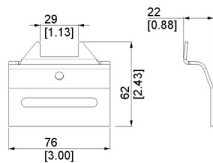
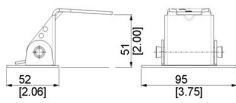
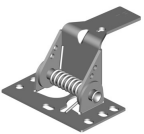
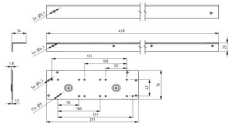
Factory price: 5.80 € excl. VAT / piece
Weight: 0.340 kg **Shipping class:** Standard

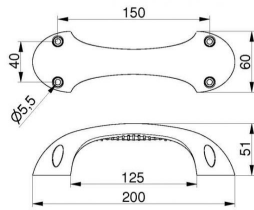
HANDLE

ARTICLE: 5407.1

Plastic handle for garage doors
Material: Nylon, Black
Includes seal and screws

Factory price: 2.86 € excl. VAT / piece
Weight: 0.070 kg **Shipping class:** Standard



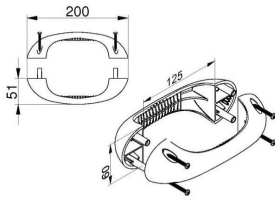


HANDLE FOR INTERIOR

ARTICLE: 85100

Plastic handle for industrial and garage doors
Material: ABS, Black

Factory price: 1.70 € excl. VAT / piece
Weight: 0.060 kg **Shipping class:** Standard

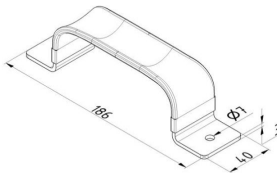


HANDLE SET

ARTICLE: 85101

Plastic handle set for industrial and garage doors
Material: ABS, Black

Factory price: 3.70 € excl. VAT / piece
Weight: 0.135 kg **Shipping class:** Standard

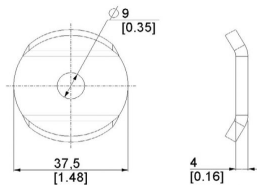
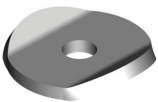


METAL HANDLE RUBBER COATED

ARTICLE: P.1

Handle for industrial and garage doors
Material: Galvanised steel

Factory price: 3.10 € excl. VAT / piece
Weight: 0.230 kg **Shipping class:** Standard



ROPE CLIP

ARTICLE: 88805

Material: Galvanised steel
Weight: 0,03 kg/szt.

Factory price: 0.30 € excl. VAT / piece
Weight: 0.030 kg **Shipping class:** Standard