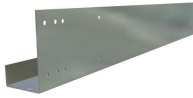


SIDE CAPS / END STEEL



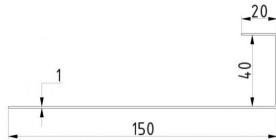
END CAP FOR PANEL 40MM H=732MM, PERFORATED

ARTICLE: kucie 732

Standard universal end cap for sectional door panels 40mm, perforated
For industrial panel , for finger-safe pabel H=732mm
Height: 715mm
Galvanised steel - 0,7mm

Factory price: 2.00 € excl. VAT / piece

Weight: 0.6 kg **Shipping class:** Standard



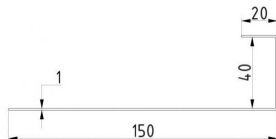
END CAP FOR PANEL 40MM, H=500MM, WIDE

ARTICLE: kucie 500 szerokie

Standard end cap for sectional door panels 40mm, not perforated
For industrial panel , for finger-safe pabel H=500mm
Height: 483mm
Galvanised steel - 1,0mm

Factory price: 5.00 € excl. VAT / piece

Weight: 0.65 kg **Shipping class:** Standard



END CAP FOR PANEL H=610MM, WIDE

ARTICLE: kucie 610 szerokie

Standard end cap for sectional door panels 40mm, not perforated
For industrial panel , for finger-safe panel H=610mm
Height: 593mm
Galvanised steel- 1,0mm

Factory price: 6.00 € excl. VAT / piece

Weight: 0.9 kg **Shipping class:** Standard



END CAP FOR PANEL H=732MM, WIDE

ARTICLE: kucie 732 szerokie

Standard end cap for sectional door panels 40mm, not perforated
For industrial panel , for finger-safe panel H=732mm
Height: 715mm
Galvanised steel - 1,0mm

Factory price: 8.00 € excl. VAT / piece

Weight: 1.2 kg **Shipping class:** Standard

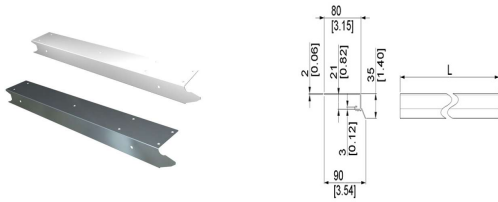
END CAP FOR PANEL HOESCH H=500MM, LEFT

ARTICLE: 17040

End cap for panel Hoesch
Material: Galvanised steel
Panel Hoesch H=500mm with finger safety edge
Left

Factory price: € excl. VAT / piece

Weight: 0.46 kg **Shipping class:** Standard



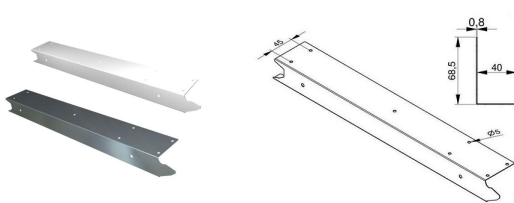
END CAP FOR PANEL HOESCH H=500MM, RIGHT

ARTICLE: 17041

End cap for panel Hoesch
Material: Galvanised steel
Panel Hoesch H=500mm with finger safe edge
Right

Factory price: 2.10 € excl. VAT / piece

Weight: 0.46 kg **Shipping class:** Standard



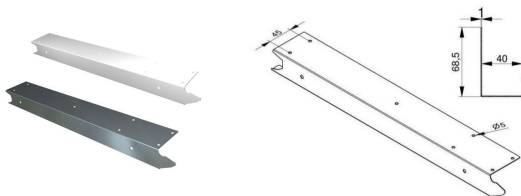
END CAP FOR PANEL HOESCH H=610MM LEFT

ARTICLE: 17044

End cap for panel Hoesch
Material: Galvanised steel
Panel Hoesch H=610mm with finger safe edge
Left

Factory price: 2.40 € excl. VAT / piece

Weight: 0.46 kg **Shipping class:** Standard



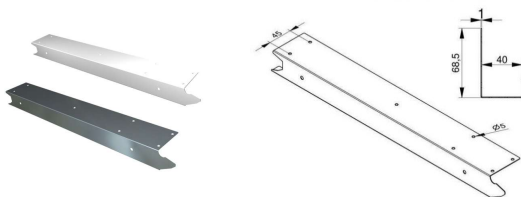
END CAP FOR PANEL HOESCH H=610MM, RIGHT

ARTICLE: 17045

End cap for panel Hoesch
Material: Galvanised steel
Panel Hoesch H=610mm with finger safe edge
Right

Factory price: 2.40 € excl. VAT / piece

Weight: 0.46 kg **Shipping class:** Standard



END CAP FOR PANEL EPCO, H=500MM, LEFT

ARTICLE: 17032

End cap for sectional door panel EPCO
Material: Galvanised steel
Panel EPCO H=500mm with finger safe edge
Left

Factory price: 2.90 € excl. VAT / piece
Weight: 0.38 kg **Shipping class:** Standard

END CAP FOR PANEL EPCO, H=500MM, RIGHT

ARTICLE: 17033

End cap for sectional door panel EPCO
Material: Galvanised steel
Panel EPCO H=500mm with finger safe edge
Right

Factory price: 2.90 € excl. VAT / piece
Weight: 0.38 kg **Shipping class:** Standard

END CAP FOR PANEL EPCO, H=500MM, LEFT RAL9016

ARTICLE: RAL 9016

End cap for sectional door panel EPCO
Material: Galvanised steel , RAL9016
Panel EPCO H=500mm with finger safe edge
Left

Factory price: 0.00 € excl. VAT / piece
Weight: 0.38 kg **Shipping class:** Standard

END CAP FOR PANEL EPCO, H=500MM, RIGHT, RAL9016

ARTICLE: RAL 9016

End cap for sectional door panel EPCO
Material: Galvanised steel , RAL9016
Panel EPCO H=500mm with finger safe edge
Right

Factory price: 1.90 € excl. VAT / piece
Weight: 0.38 kg **Shipping class:** Standard

END CAP FOR PANEL EPCO, H=610MM, LEFT

ARTICLE: 17036

End cap for sectional door panel EPCO
Material: Galvanised steel
Panel EPCO H=610mm with finger safe edge
Left

Factory price: 3.30 € excl. VAT / piece
Weight: 0.47 kg **Shipping class:** Standard

END CAP FOR PANEL EPCO, H=610MM, RIGHT

ARTICLE: 17037

End cap for sectional door panel EPCO
Material: Galvanised steel
Panel EPCO H=610mm with finger safe edge
Right

Factory price: 3.30 € excl. VAT / piece
Weight: 0.47 kg **Shipping class:** Standard

END CAP FOR PANEL EPCO, H=610MM, LEFT, RAL9016

ARTICLE: RAL 9016

End cap for sectional door panel EPCO
Material: Galvanised steel , RAL9016
Panel EPCO H=610mm with finger safe edge
Left

Factory price: 2.85 € excl. VAT / piece
Weight: 0.47 kg **Shipping class:** Standard

END CAP FOR PANEL EPCO, H=610MM, RIGHT, RAL9016

ARTICLE: RAL 9016

End cap for sectional door panel EPCO
Material: Galvanised steel , RAL9016
Panel EPCO H=610mm with finger safe edge
Right

Factory price: 2.85 € excl. VAT / piece
Weight: 0.47 kg **Shipping class:** Standard

END CAP FOR PANEL EPCO, H=555MM, LEFT

ARTICLE: 17080

End cap for sectional door panel EPCO
Material: Galvanised steel
Panel EPCO H=555mm with finger safe edge
Left

Factory price: 2.50 € excl. VAT / piece
Weight: 0.43 kg **Shipping class:** Standard

END CAP FOR PANEL EPCO, H=555MM, RIGHT

ARTICLE: 17081

End cap for sectional door panel EPCO
Material: Galvanised steel
Panel EPCO H=555mm with finger safe edge
Right

Factory price: 2.50 € excl. VAT / piece
Weight: 0.43 kg **Shipping class:** Standard

END CAP FOR PANEL EPCO, H=555MM, RIGHT, RAL 9016

ARTICLE: RAL 9016

End cap for sectional door panel EPCO
Material: Galvanised steel , RAL9016
Panel EPCO H=555mm with finger safe edge
Right

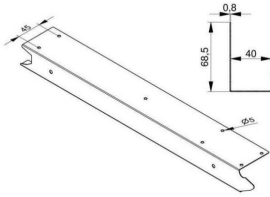
Factory price: 2.31 € excl. VAT / piece
Weight: 0.43 kg **Shipping class:** Standard

END CAP FOR PANEL EPCO, H=625MM,RIGHT, RAL9016

ARTICLE: 217087-RAL 9016

End cap for sectional door panel EPCO
Material: Galvanised steel , RAL9016
Panel EPCO H=625mm with finger safe edge
Right

Factory price: 2.28 € excl. VAT / piece
Weight: 0.48 kg **Shipping class:** Standard



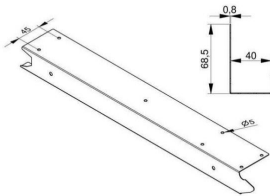
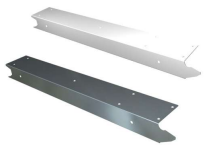
**END CAP FOR SECTIONAL DOOR PANEL
MARCEGAGLIA-METECHNO-ITALPANNELLI H=500MM
LEFT**

ARTICLE: 17060

End cap for sectional door panel Marcegaglia-Metechno-Italpanelli
Material: Galvanised steel
Panel H=500mm with finger safe edge
Left

Factory price: 3.50 € excl. VAT / piece

Weight: 0.38 kg **Shipping class:** Standard



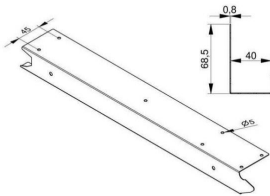
**END CAP FOR SECTIONAL DOOR PANEL
MARCEGAGLIA-METECHNO-ITALPANNELLI
H=500MM, PRAWO**

ARTICLE: 17061

End cap for sectional door panel Marcegaglia-Metechno-Italpanelli
Material: Galvanised steel
Panel H=500mm with finger safe edge
Right

Factory price: 3.50 € excl. VAT / piece

Weight: 0.38 kg **Shipping class:** Standard



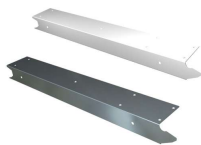
**END CAP FOR SECTIONAL DOOR PANEL
MARCEGAGLIA-METECHNO-ITALPANNELLI H=500MM
LEFT, RAL9016**

ARTICLE: 17062

End cap for sectional door panel Marcegaglia-Metechno-Italpanelli
Material: Galvanised steel , RAL9016
Panel H=500mm with finger safe edge
Strona: Left

Factory price: 4.50 € excl. VAT / piece

Weight: 0.38 kg **Shipping class:** Standard



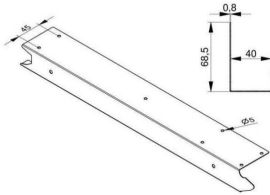
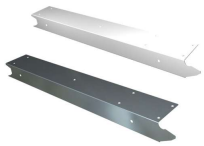
**END CAP FOR SECTIONAL DOOR PANEL
MARCEGAGLIA-METECHNO-ITALPANNELLI
H=500MM,RIGHT, RAL9016**

ARTICLE: 17063

End cap for sectional door panel Marcegaglia-Metechno-Italpanelli
Material: Galvanised steel, RAL9016
Panel H=500mm with finger safe edge
Right

Factory price: 4.50 € excl. VAT / piece

Weight: 0.38 kg **Shipping class:** Standard



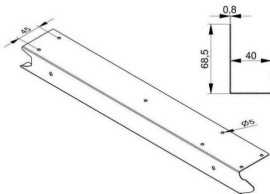
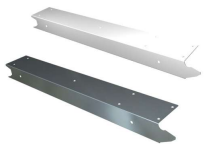
**END CAP FOR SECTIONAL DOOR PANEL
MARCEGAGLIA-METECHNO-ITALPANNELLI H=610MM
LEFT**

ARTICLE: 17064

End cap for sectional door panel Marcegaglia-Metechno-Italpanelli
Material: Galvanised steel
Panel H=610mm with finger safe edge
Left

Factory price: 4.00 € excl. VAT / piece

Weight: 0.47 kg **Shipping class:** Standard



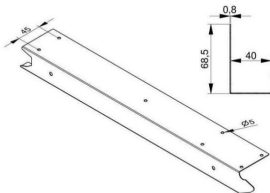
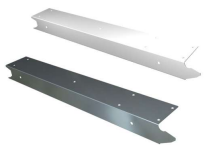
**END CAP FOR SECTIONAL DOOR PANEL
MARCEGAGLIA-METECHNO-ITALPANNELLI
H=610MM, PRAWO**

ARTICLE: 17065

End cap for sectional door panel Marcegaglia-Metechno-Italpanelli
Material: Galvanised steel , RAL9016
Panel H=610mm with finger safe edge
Right

Factory price: 4.00 € excl. VAT / piece

Weight: 0.47 kg **Shipping class:** Standard



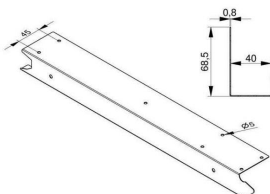
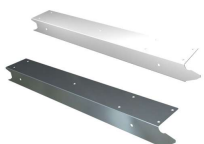
**END CAP FOR SECTIONAL DOOR PANEL
MARCEGAGLIA-METECHNO-ITALPANNELLI H=610MM
LEFT, RAL9016**

ARTICLE: 17066

End cap for sectional door panel Marcegaglia-Metechno-Italpanelli
Material: Galvanised steel , RAL9016
Panel H=610mm with finger safe edge
Left

Factory price: 5.10 € excl. VAT / piece

Weight: 0.47 kg **Shipping class:** Standard



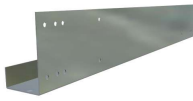
**END CAP FOR SECTIONAL DOOR PANEL
MARCEGAGLIA-METECHNO-ITALPANNELLI H=610MM
RIGHT, RAL9016**

ARTICLE: 17067

End cap for sectional door panel Marcegaglia-Metechno-Italpanelli
Material: Galvanised steel , RAL9016
Panel H=610mm with finger safe edge
Right

Factory price: 5.10 € excl. VAT / piece

Weight: 0.47 kg **Shipping class:** Standard



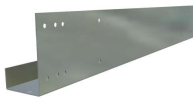
SIDE CAP FOR DOOR PANEL 40MM H=500MM PERFORATED

ARTICLE: kucie 500

Universal standard side cap for panel 40mm, prrforated
Can be used for industrial (symeteric) panel and finger protection panel H=500mm
Heihgt: 483mm
Material: Galvanised steel 0,7mm

Factory price: 1.70 € excl. VAT / piece

Weight: 0.340 kg **Shipping class:** Standard



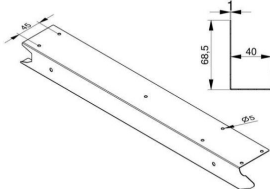
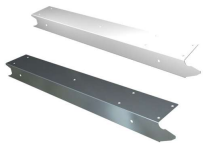
SIDE CAP FOR DOOR PANEL 40MM H=610MM PERFORATED

ARTICLE: kucie 610

Universal standard side cap for panel 40mm, prrforated
Can be used for industrial (symeteric) panel and finger protection panel H=610mm
Height: 593mm
Material: Galvanised steel: 0,7mm

Factory price: 1.80 € excl. VAT / piece

Weight: 0.450 kg **Shipping class:** Standard



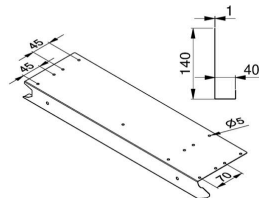
ZAKOŃCZNIK PANELU EPCO, H=555MM, LEWE, RAL9016

ARTICLE: RAL 9016

End cap for sectional door panel EPCO
Material: Galvanised steel , RAL9016
Panel EPCO H=555 mmwith finger safe edge
Left

Factory price: 3.80 € excl. VAT / piece

Weight: 0.43 kg **Shipping class:** Standard



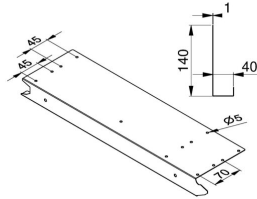
ENDCAP DOUBLE EPCO 40-500MM GALVANIZED LEFT

ARTICLE: 17090

Zinc plated double end cap for EPCO panel with finger pinch safety.
Suitable for hinges 25736, 25165 & 230105-106.

Factory price: 4.50 € excl. VAT / piece

Weight: 1 kg **Shipping class:** Standard



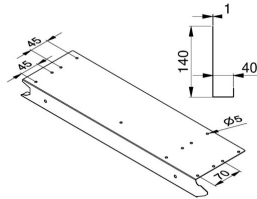
ENDCAP DOUBLE EPCO 40-555MM GALVANIZED LEFT

ARTICLE: 17092

Zinc plated double end cap for EPCO panel with finger pinch safety. Suitable for hinges 25736, 25165 & 230105-106.

Factory price: 4.50 € excl. VAT / piece

Weight: 0.67 kg **Shipping class:** Standard



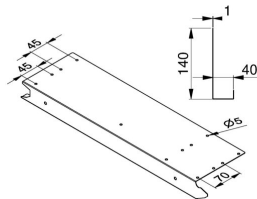
ENDCAP DOUBLE EPCO 40-555MM GALVANIZED RIGHT

ARTICLE: 17093

Zinc plated double end cap for EPCO panel with finger pinch safety. Suitable for hinges 25736, 25165 & 230105-106.

Factory price: 4.50 € excl. VAT / piece

Weight: 0.67 kg **Shipping class:** Standard



ENDCAP DOUBLE EPCO 40-610MM GALVANIZED LEFT

ARTICLE: 17094

Zinc plated double end cap for EPCO panel with finger pinch safety. Suitable for hinges 25736, 25165 & 230105-106.

Factory price: 4.50 € excl. VAT / piece

Weight: 0.73 kg **Shipping class:** Standard