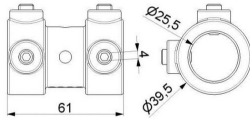


COUPLINGS

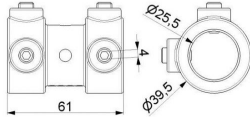


ALUMINIUM ADJUSTABLE COUPLER

ARTICLE: 5004

Aluminium coupler for 25,4mm shafts
Material: Alloy
With 4 set screws for shaft fixation

Factory price: 3.80 € excl. VAT / piece
Weight: 1.330 kg **Shipping class:** Standard

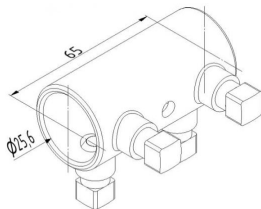
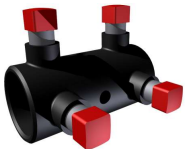


ALUMINIUM ADJUSTABLE COUPLER

ARTICLE: 96545

Aluminium coupler for 25,4mm shafts
Material: Alloy
With 4 set screws for shaft fixation

Factory price: 3.80 € excl. VAT / piece
Weight: 1.330 kg **Shipping class:** Standard

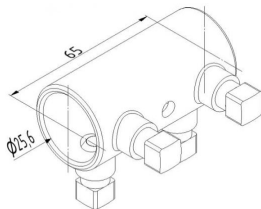
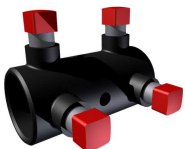


COUPLING FOR 25,4 SHAFT OF RESIDENTIAL DOORS

ARTICLE: 5045.1

Coupling for 25,4 shaft
Material: Galvanised steel
With 4 set screws for shaft fixation
Length: 65 mm

Factory price: 4.40 € excl. VAT / piece
Weight: 0.180 kg **Shipping class:** Standard

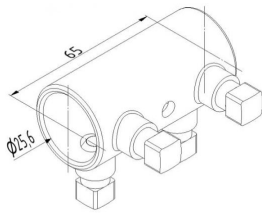
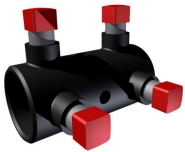


COUPLING FOR 25,4 SHAFT OF RESIDENTIAL DOORS

ARTICLE: 30581

Coupling for 25,4 shaft
Material: Galvanised steel
With 4 set screws for shaft fixation
Length: 65 mm

Factory price: 4.40 € excl. VAT / piece
Weight: 0.180 kg **Shipping class:** Standard

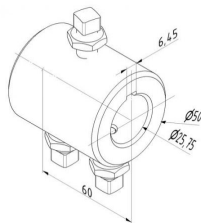


COUPLING FOR 25,4 SHAFT OF RESIDENTIAL DOORS

ARTICLE: 88303

Coupling for 25,4 shaft
Material: Galvanised steel
With 4 set screws for shaft fixation L=19mm
Length: 65 mm

Factory price: 4.40 € excl. VAT / piece
Weight: 0.180 kg **Shipping class:** Standard

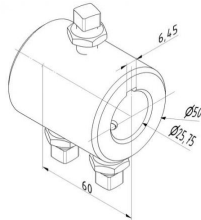


SOLID COUPLING FOR 25,4MM SHAFT WITH KEYWAY

ARTICLE: 5017.1

Solid coupling for 25,4mm shaft with keyway
Material: Galvanised steel
With 3 set screws for shaft fixation
Length: 60mm

Factory price: 7.70 € excl. VAT / piece
Weight: 0.630 kg **Shipping class:** Standard

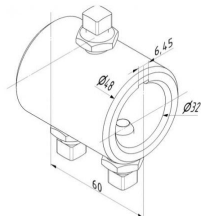


SOLID COUPLING FOR 25,4MM SHAFT WITH KEYWAY

ARTICLE: 25932

Solid coupling for 25,4mm shaft with keyway
Material: Galvanised steel
With 3 set screws for shaft fixation
Length: 60mm

Factory price: 7.70 € excl. VAT / piece
Weight: 0.630 kg **Shipping class:** Standard

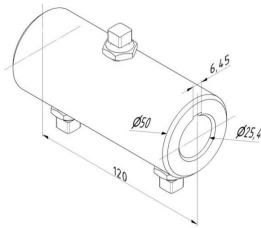


SOLID COUPLING FOR 31,75MM SHAFT WITH KEYWAY

ARTICLE: 5517

Solid coupling for 31,75mm shaft with keyway
Material: Galvanised steel
With 3 set screws for shaft fixation
Length: 65 mm

Factory price: 11.50 € excl. VAT / piece
Weight: 0.510 kg **Shipping class:** Standard



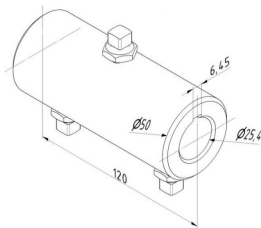
SOLID COUPLING FOR 25,4MM SHAFT WITH KEYWAY

ARTICLE: 5034.1

Solid coupling for 25,4mm shaft with keyway
Material: Galvanised steel
With 3 set screws for shaft fixation
Length: 120mm

Factory price: 14.50 € excl. VAT / piece

Weight: 1.230 kg **Shipping class:** Standard



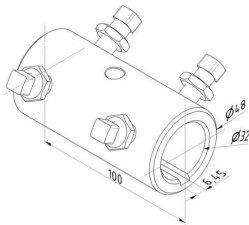
SOLID COUPLING FOR 25,4MM SHAFT WITH KEYWAY

ARTICLE: 25934

Solid coupling for 25,4mm shaft with keyway
Material: Galvanised steel
With 3 set screws for shaft fixation
Length: 120mm

Factory price: 14.50 € excl. VAT / piece

Weight: 1.230 kg **Shipping class:** Standard



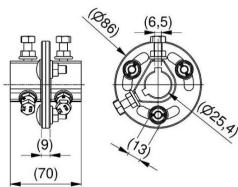
SOLID COUPLING FOR 31,75MM SHAFT WITH KEYWAY

ARTICLE: 5534.1

Solid coupling for 31,75mm shaft with keyway
Material: Galvanised steel
With 4 set screws for shaft fixation
Length: 100 mm

Factory price: 19.00 € excl. VAT / piece

Weight: 1.230 kg **Shipping class:** Standard



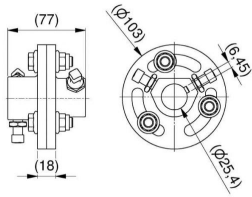
HEAVY DUTY ADJUSTABLE COUPLING FOR SHAFT 25,4MM

ARTICLE: 75003

Heavy duty adjustable coupling for shaft 25,4mm with keyway
Material: Cast steel
Consisting of 2 parts with keyway a set screws

Factory price: 15.50 € excl. VAT / piece

Weight: 0.700 kg **Shipping class:** Standard



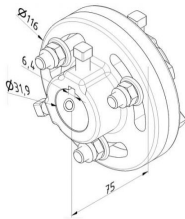
HEAVY DUTY ADJUSTABLE COUPLING FOR SHAFT 25,4MM

ARTICLE: 5042.1

Heavy duty adjustable coupling for shaft 25,4mm with keyway
Material: Cast steel
Consisting of 2 parts with keyway a set screws

Factory price: 13.00 € excl. VAT / piece

Weight: 1.230 kg **Shipping class:** Standard



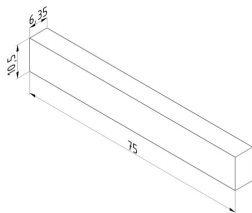
HEAVY DUTY ADJUSTABLE COUPLING FOR SHAFT 31,75MM

ARTICLE: 5044

Heavy duty adjustable coupling for shaft 31,75mm
Material: Cast steel
Consisting of 2 parts with keyway and set screws

Factory price: 23.00 € excl. VAT / piece

Weight: 1.930 kg **Shipping class:** Standard



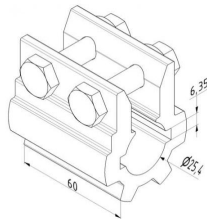
RECTANGLE KEY 6.35X10.5X75 MM

ARTICLE: 5064

Suitable for hollow shaft with keyway (25018 or 25019).
Material: Zinc-plated steel

Factory price: 33.85 € excl. VAT / piece

Weight: 0.04 kg **Shipping class:** Dłużyca



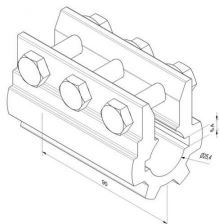
ALUMINIUM COUPLING

ARTICLE: 95765

Aluminium coupling with 2 keyways
Material: Aluminium
Length: 60mm

Factory price: 4.30 € excl. VAT / piece

Weight: 0.270 kg **Shipping class:** Standard



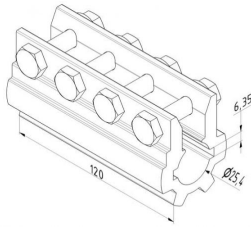
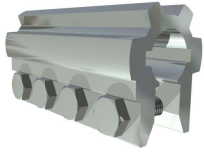
ALUMINIUM COUPLING

ARTICLE: 95766

Aluminium coupling with 2 keyways
Material: Aluminium
Length: 90mm

Factory price: 8.50 € excl. VAT / piece

Weight: 0.400 kg **Shipping class:** Standard



ALUMINIUM COUPLING

ARTICLE: 95767

Aluminium coupling with 2 keyways

Material: Aluminium

Length: 120mm

Factory price: 9.00 € excl. VAT / piece

Weight: 0.540 kg **Shipping class:** Standard