

SHAFTS

1/4" X 3/8" STRAIGHT

ARTICLE: 10095

material: zinc plated steel
edges: round edges

Factory price: 33.85 € excl. VAT / piece

Weight: 0.035 kg Shipping class: Dłużyca

1/4" X 1/4" STRAIGHT 6,3X6,3MM L=75MM

ARTICLE: 42590

material: steel
edges: round edges

Factory price: 33.85 € excl. VAT / piece

Weight: 0.023 kg Shipping class: Standard

SHAFT COLLAR WITH SQ SET SCREW, SHAFT DIA 25,4MM

ARTICLE: 72151

material: zinc plated steel
socket for 3/8" SQ: 11mm 12 sides socket
socket for 5/16" SQ: 10mm 12 sides socket

Factory price: 33.85 € excl. VAT / piece

Weight: 0.00 kg Shipping class: Dłużyca

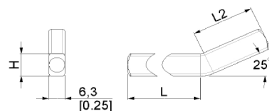
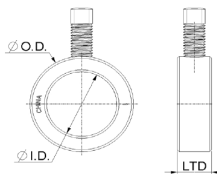
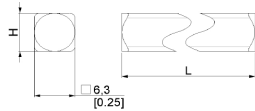
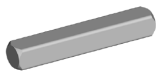
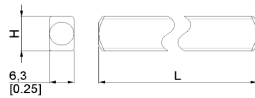
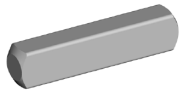
1/4" X 3/8" BENT

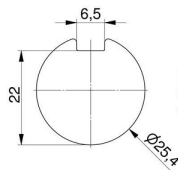
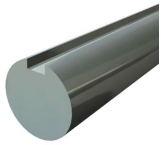
ARTICLE: 84192

material: zinc plated steel
edges: round
H=9.5mm
L=48.5mm
L2=25mm

Factory price: 33.85 € excl. VAT / piece

Weight: 0.035 kg Shipping class: Dłużyca



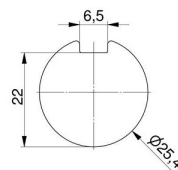
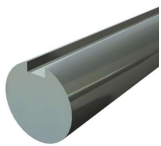


SOLID SHAFT 25,4MM WITH KEYWAY, L=3500MM

ARTICLE: 3500

Solid shaft 25,4mm with keyway
Material: Galvanised steel
Length: 3500mm
To be used with key25048 or 25062

Factory price: 68.00 € excl. VAT / piece
Weight: 13.3 kg **Shipping class:** Dłużyca

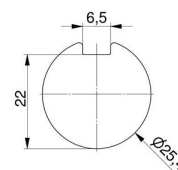
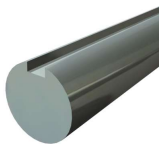


SOLID SHAFT 25,4MM WITH KEYWAY, L=4500MM

ARTICLE: 4500

Solid shaft 25,4mm with keyway
Material: Galvanised steel
Length: 4500mm
To be used with key25048 or 25062

Factory price: 44.37 € excl. VAT / piece
Weight: 17.1 kg **Shipping class:** Dłużyca

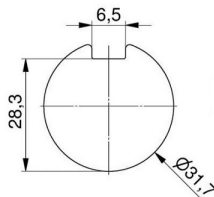
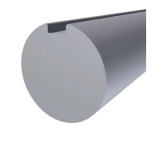


SOLID SHAFT 25,4MM WITH KEYWAY, L=6100MM

ARTICLE: 6100

Solid shaft 25,4mm with keyway
Material: Galvanised steel
Length: 6100mm
To be used with key 25048 or 25062

Factory price: 132.00 € excl. VAT / piece
Weight: 23.0 kg **Shipping class:** Dłużyca

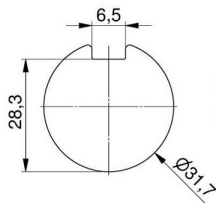
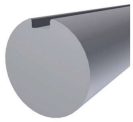


SOLID SHAFT 31,7MM WITH KEYWAY L=4500MM

ARTICLE: 4500

Solid shaft 31,7mm with keyway
Material: Galvanised steel
Length: 4500mm
To be used with key 25048 or 25062

Factory price: 97.72 € excl. VAT / piece
Weight: 27.45 kg **Shipping class:** Standard

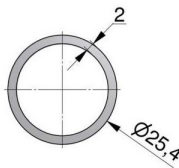


SOLID SHAFT 31,7MM WITH KEYWAY L=6000MM

ARTICLE: 6000

Solid shaft 31,7mm with keyway
Material: Galvanised steel
Length: 6000mm
To be used with key25048 or 25062

Factory price: 127.04 € excl. VAT / piece
Weight: 36 kg **Shipping class:** Standard

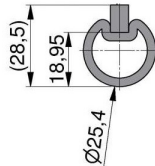
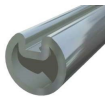


HOLLOW SHAFT 25,4 -2MM WITHOUT KEYWAY, L=6000MM

ARTICLE: 6000

Hollow shaft 25,4mm without keyway
Material: Galvanised steel
Shaft wall thickness 2mm
Length: 6000mm

Factory price: 37.00 € excl. VAT / piece
Weight: 6.6 kg **Shipping class:** Dłużyca

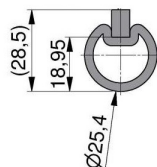
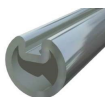


HOLLOW SHAFT 25,4-3MM WITH KEYWAY, L=3500MM

ARTICLE: 3500

Hollow shaft 25,4mm with keyway
Material: Galvanised steel
Shaft wall thickness 3mm
Length: 3500mm
To be used with key26062 or 26064

Factory price: 12.00 € excl. VAT / piece
Weight: 5.95 kg **Shipping class:** Dłużyca

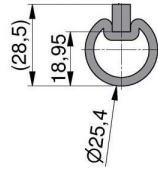
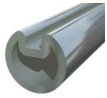


HOLLOW SHAFT 25,4-3MM WITH KEYWAY, L=4500MM

ARTICLE: 4500

Hollow shaft 25,4mm with keyway
Material: Galvanised steel
Shaft wall thickness 3mm
Length: 4500mm
To be used with key26062 or 26064

Factory price: 17.00 € excl. VAT / piece
Weight: 7.65 kg **Shipping class:** Dłużyca

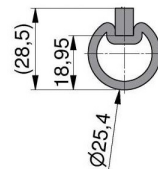
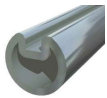


**HOLLOW SHAFT 25,4-3MM WITH KEYWAY,
L=5000MM**

ARTICLE: 5000 P

Hollow shaft 25,4mm with keyway
Material: Galvanised steel
Shaft wall thickness 3mm
Length: 5000mm
To be used with key26062 or 26064

Factory price: 21.40 € excl. VAT / piece
Weight: 8.7 kg **Shipping class:** Dłużyca

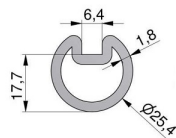


**HOLLOW SHAFT 25,4-3MM WITH KEYWAY,
L=6000MM**

ARTICLE: 6000

Hollow shaft 25,4mm with keyway
Material: Galvanised steel
Shaft wall thickness 3mm
Length: 6000mm
To be used with key26062 or 26064

Factory price: 29.72 € excl. VAT / piece
Weight: 10.2 kg **Shipping class:** Dłużyca

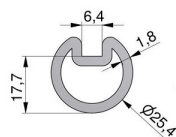
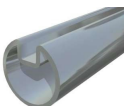


**HOLLOW SHAFT 25,4 - 1,8MM WITH KEYWAY,
L=3200MM**

ARTICLE: 3200 P

Hollow shaft 25,4mm with keyway
Material: Galvanised steel
Shaft wall thickness 1,8mm
Length: 3200mm
To be used with key25064 or 25073

Factory price: 10.70 € excl. VAT / piece
Weight: 3.84 kg **Shipping class:** Dłużyca



**HOLLOW SHAFT 25,4 - 1,8MM WITH KEYWAY,
L=6000MM**

ARTICLE: 6000

Hollow shaft 25,4mm with keyway
Material: Galvanised steel
Shaft wall thickness 1,8mm
Length: 6000mm
To be used with key25064 or 25073

Factory price: 20.00 € excl. VAT / piece
Weight: 7.5 kg **Shipping class:** Dłużyca

STRAIGHT KEY FOR SOLID SHAFT

ARTICLE: 5048

Straight key for solid shaft for garage and industrial doors
 Material: Galvanised steel
 Dimensions: 6,35 x 6,36 x 100mm

Factory price: 0.70 € excl. VAT / piece
Weight: 0.030 kg **Shipping class:** Standard

BENT KEY FOR SOLID SHAFT

ARTICLE: 5062.1

Bent key for solid shaft for garage and industrial doors
 Material: Galvanised steel
 Dimensions: 6,35 x 6,36 x 90mm

Factory price: 0.80 € excl. VAT / piece
Weight: 0.030 kg **Shipping class:** Standard

BENT HIGH KEY FOR HOLLOW SHAFT

ARTICLE: 5073

Bent key for hollow shaft for garage and industrial doors
 Material: Galvanised steel
 Dimensions: 10,5 x 6,36 x 98mm

Factory price: 1.10 € excl. VAT / piece
Weight: 0.050 kg **Shipping class:** Standard

BENT HIGH KEY FOR HOLLOW SHAFT

ARTICLE: 6062

Bent key for hollow shaft for garage and industrial doors
 Material: Galvanised steel
 Dimensions: 9,53 x 6,35 x 96mm

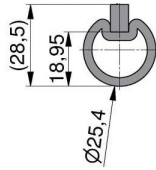
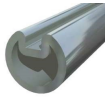
Factory price: 1.30 € excl. VAT / piece
Weight: 0.050 kg **Shipping class:** Standard

STRAIGHT HIGH KEY FOR HOLLOW SHAFT

ARTICLE: 6064

Straight key for hollow shaft for garage and industrial doors
 Material: Galvanised steel
 Dimensions: 9,53 x 6,35 x 76mm

Factory price: 0.90 € excl. VAT / piece
Weight: 0.040 kg **Shipping class:** Standard

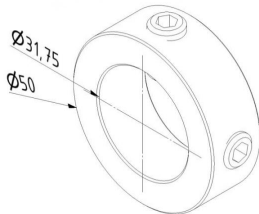


HOLLOW SHAFT 25,4-3MM WITH KEYWAY, L=3200MM

ARTICLE: 3200 P

Hollow shaft 25,4mm with keyway
Material: Galvanised steel
Shaft wall thickness 3mm
Length: 3200mm
To be used with key26062 or 26064

Factory price: 14.00 € excl. VAT / piece
Weight: 5.500 kg **Shipping class:** Dłużyca

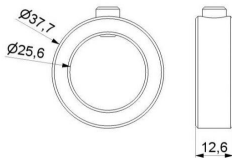


SHAFT COLLAR 31,75MM

ARTICLE: 5019.1

Shaft collar 31,75mm
Material: Galvanised steel
External diameter: 50mm

Factory price: 2.40 € excl. VAT / piece
Weight: 0.160 kg **Shipping class:** Standard

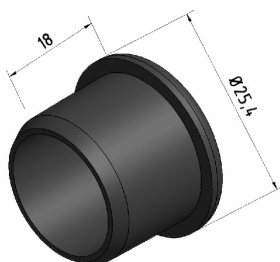


SHAFT COLLAR 25,4MM

ARTICLE: 5021

Shaft collar 25,4mm
Material: Galvanised steel
External diameter: 37,7mm

Factory price: 2.30 € excl. VAT / piece
Weight: 0.058 kg **Shipping class:** Standard

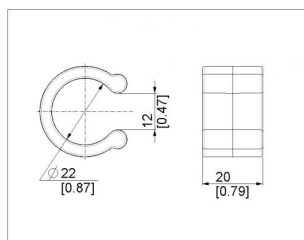


COVER FOR HOLLOW SHAFT 25,4MM-2MM WITH KEYWAY.

ARTICLE: 89406

Cover for hollow shaft 25,4mm with wall 2mm thick with keyway.
Material: Rubber
External diameter: 21mm

Factory price: 0.30 € excl. VAT / piece
Weight: 0.004 kg **Shipping class:** Standard



PLASTIC SPACER FOR SHAFT 25,4MM

ARTICLE: 98273

Plastic spacer for garage door shaft 25,4mm

Material: Nylon

Height: 20mm

Factory price: 0.30 € excl. VAT / piece

Weight: 0.003 kg **Shipping class:** Standard